



THE PLAZA PULSE

SHEPHERD PARK PLAZA CIVIC CLUB

July 2024

BOARD OF DIRECTORS

[Officers]

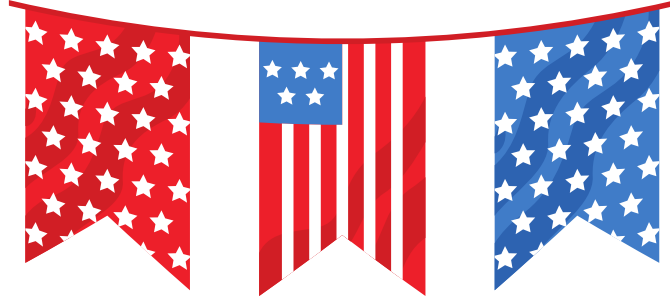
President Davi Garza
Vice President Carmen Busceme
Secretary Kelly McNeill
Treasurer Tom Caver

[Committees]

Advertising & Publicity Jessica Burton
Architectural Control Darryl Rickaway
Citizens Patrol Deborah De Bram
City Liaison Deborah De Bram,
Katherine Peale
Communications Jesse Yoburn
Constable Patrol Coordinator Bill Scheel
Decorating Awards Traci Hahn
Deed Restrictions Darryl Rickaway
Entrance Bed Maintenance Mitch Sheaffer
Greeters Amanda Huston, Shannon
Zierau, Fran Marino
Historian Joy Tober
Hospitality Jodi Boyd, John Garza,
Rachel Mathews, Courtney Sheaffer,
Kevin Simpson, Jason Levar
Membership Jesse Yoburn
Plaza Pulse Sarah Waller

[Representatives]

Section 1 Rep. Michelle Narat
Section 2 Rep. Sarah Suarez
Section 3 Rep. Carmen Busceme
Section 4 Rep. Grant Gauld
Garden Club Rep. Davi Garza
Plaza Moms Rep. Daisy Miller



Neighborhood

4TH OF JULY PARADE

**9:00AM Parade starts at Bethlehem & Apollo
Followed by Kona Ice at Shepherd Park**

**Hosted by SPP Civic Club, CP Civic Club, & Plaza
Moms**



Share Your News!

Do you have an interesting story or news you want to share? Do you have ideas about content that you would like to see in future Plaza Pulse Newsletters?

We want to hear from you! Please let us know by emailing Pulse@shepherdparkplaza.com

Deadline for submissions is the 15th of each month

Come dressed in your most patriotic gear. This includes decorating your bike, stroller, golf cart, and YOU.



Please be ready at the parade starting point at 8:45am to ensure you are included in the parade.



If you miss the start, you are welcome to join the parade at any point along the route (see the route map on page 4).



Parade order will be golf carts, bikes, then walkers & strollers. This allows for a safe, smooth flow & pace.

Around the neighborhood

Shepherd Park Plaza Civic Club

Welcome New Residents!

New to the neighborhood? Looking to connect and find out more information about the Shepherd Park Plaza neighborhood? Please contact our SPP Civic Club Board Greeters so we can welcome you officially! All new neighbors receive a welcome packet, so reach out to our neighborhood greeters if you haven't received yours.

Going on vacation soon? Planning to be away from home for an extended time?

Be sure to sign up for the Constable Vacation Watch! Recommended to give a 2-week notice, if possible.
<http://pct1constable.net/sign-up/vacation-watch/>

Neighborhood Shout Outs!

Do you have an upcoming celebration? Do you want to give a special shout out of recognition or honor? \$25 will secure you a business card size space to highlight and share your news! All proceeds go to the SPP Constable Program fundraising. Send an email to pulse@shepherdparkplaza.com for any questions and content submission. Deadline for submissions is the 15th of each month. First paid, first published. Spaces limited to 4 shout outs per month.

In the Neighborhood

City of Houston Drainage and Paving Project

The City of Houston Garden Oaks and Shepherd Park (West) Drainage and Paving Project appears to be complete. Questions? Contact City of Houston buildforward@houstontx.gov or 713.387.0311

4th of July Holiday Yard Decorating Awards

Show your patriotic spirit! Holiday yard decorating awards will be given for each section.

Save the Dates!

We have a lot of fun events coming up this summer! Stay tuned to the Plaza Pulse, SPP Facebook group, and emails for more information!

- 4th of July Parade -July 4th

Check out the Shepherd Park Plaza website for access to the Plaza Pulse online, as well as key documents, such as the New Neighbor Packet, membership and constable dues validation, and much more!
<https://shepherdparkplaza.com>



Check out the Shepherd Park Plaza Facebook page for recent discussions, news, alerts, ideas, recommendations, and neighborhood events

Ready to pay your annual Civic Club dues and join the Constable Contract? You can pay by check, Venmo (@SPPCC), scan the provided QR code, or visit the link below. Checks should be made out to SPPCC and can be mailed to

SPPCC P.O. Box 10453 Houston, TX 77206.

Please include your name and address in the memo.

<https://shepherdparkplaza.com/dues>



Can't remember if you contributed? Check link online or email Membership@shepherdparkplaza.com.

If you haven't received your Constable Program sticker, please contact your Section Rep.

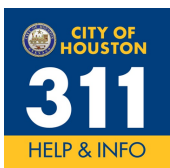
Civic Club: \$25 Constable Program: \$325

City of Houston Council Member, Mario Castillo, represents the Shepherd Park Plaza neighborhood. Find out more how he represents District H, as well as FAQs at www.houstontx.gov/council/h/



We appreciate our local advertisers!

The local advertisers that you see throughout the Plaza Pulse help pay for the printing of our neighborhood newsletter. Please show your support and consider contacting one of these local businesses the next time you need a quote or service.



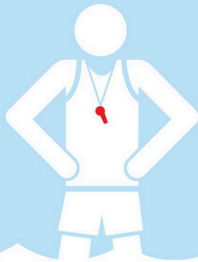
Street sign down? Traffic light blinking? Tree limb down over the street? The City of Houston has a dedicated phone line and app for these types of non-emergency related issues. Call 311 or 713-837-0311.



American Red Cross

Water Safety Tips

Swim in designated areas supervised by lifeguards.



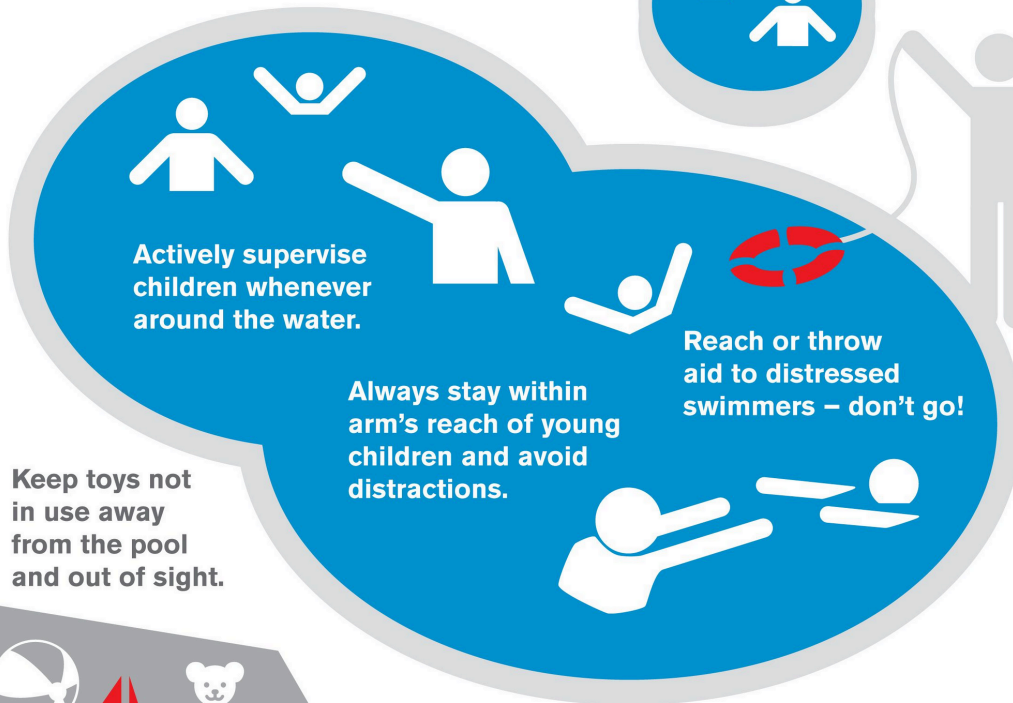
Always swim with a buddy.



If you go boating, wear a life jacket!



Install and use barriers around your home pool or hot tub.



Keep toys not in use away from the pool and out of sight.



Be water safe this summer. redcross.org/watersafetytips

We strive to work as hard as our clients did in building their wealth.



Elizabeth Love Morrison
Financial Advisor, CDFA®



Scan the QR code to connect today.

LOW PRICES

FREE ESTIMATES

CHARLIE ROOFING
HARDI SIDING
BBB 5 GOLD STAR RATING

Office: 713-688-6463

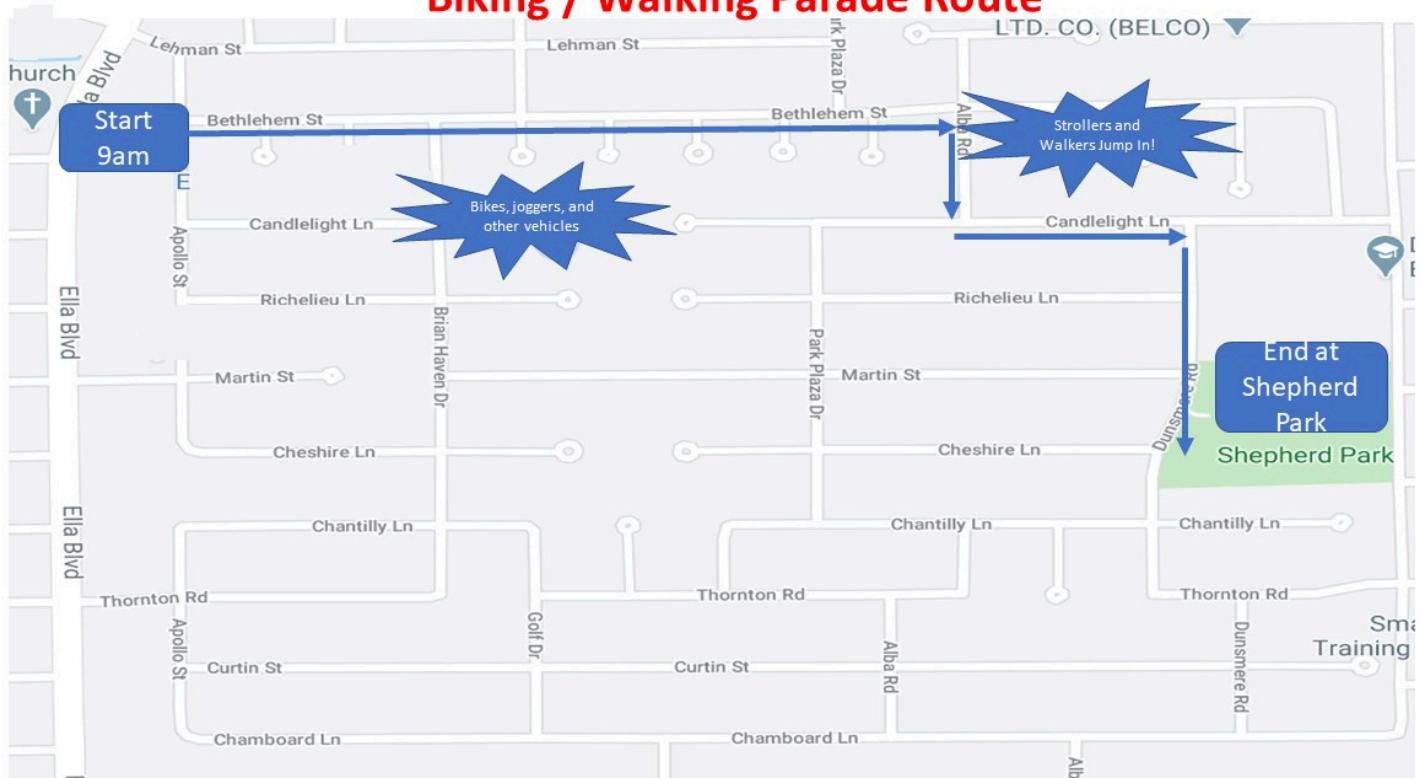
Cell: 281-389-4654



New to the neighborhood, new to motherhood, or just now feeling ready to join a mother's group? Plaza Moms Society is the place for you! We are a group of local moms that cultivates friendship and support for mothers in the Shepherd Park Plaza and Candlelight Plaza area. We have large scale family events like Holiday in the Park and smaller monthly 'mom night' events like Spa Night. We aim to foster a sense of camaraderie through our planned events, casual playdates, and online community.

We at Plaza Moms Society are busy planning an exciting 2023-2024 season. If you haven't yet, please visit us at plazamomssociety.wildapricot.org to sign up and get the latest information on events. Check us out on Facebook and Instagram too!

Biking / Walking Parade Route





Clark/Kotzur Team

RE/MAX Metro

Mike Clark (SPP Resident)
713-906-4148
mike@clarkkotzurteam.com

Debbie Kotzur
713-822-4951
debbie@debbiekotzur.com

PRESSURE WASHING SERVICES



FREE ESTIMATE FOR SPP NEIGHBORS

Will York
832-314-3095

Nick Woodfin
713-202-0475



The Plaza Garden Club meets on the second Monday of the month, September - May. Please contact gardenclub@shepherdparkplaza.com for details if you would like to join us in the fall! We would love to have you!

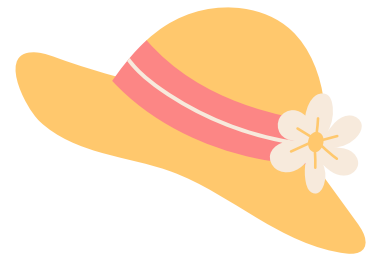
It's Getting Hot Out There!

- ✔ Never leave people or pets in a closed car on a warm day.
- ✔ If air conditioning is not available in your home go to a cooling center.
- ✔ Take cool showers or baths.
- ✔ Wear loose, lightweight, light-colored clothing.
- ✔ Use your oven less to help reduce the temperature in your home.
- ✔ If you're outside, find shade. Wear a hat wide enough to protect your face.
- ✔ Drink plenty of fluids to stay hydrated.
- ✔ Avoid high-energy activities or work outdoors, during midday heat, if possible.
- ✔ Check on family members, older adults and neighbors.
- ✔ Watch for heat cramps, heat exhaustion and heat stroke.
- ✔ Consider pet safety. If they are outside, make sure they have plenty of cool water and access to comfortable shade. Asphalt and dark pavement can be very hot to your pet's feet.
- ✔ If using a mask, use one that is made of breathable fabric, such as cotton, instead of polyester. Don't wear a mask if you feel yourself overheating or have trouble breathing.



WORKING IN THE HEAT?

8 OZ
 EVERY 15-20
 MINUTES
24-32 OZ
 PER HOUR



**Neighbor,
 Top 20 under 40
 Realtor & Community
 Advocate.**

jessica@indyquest.net | 281-704-2061



Kristi Kolmetz
 BROKER/OWNER

✉ Kristi@KristiKolmetz.com

☎ 281.723.9801

🌐 oaksrealtytx.com

Shepherd Park Plaza neighbor

Deputy Constable Program Response Calls

Figures are for entire contract, including SPP and Candlelight Plaza

May 2024

CONTRACT CHECKS...151	MILES PATROLLED...1,801	MEET THE CITIZEN / OFFICER...5
VACATION WATCH ... 3	INFORMATION CALL...2	FOLLOW UP...2
DISTURBANCE/OTHER...2	SUSPICIOUS PERSON...3	CIVIL PROCESS...2
STOLEN VEHICLE...1	WELFARE CHECK...4	
TRAFFIC STOP ...2	MENTAL HEALTH CALL...1	
K9 DEPLOYMENT...1	THEFT/OTHER...3	

See Something, Say Something - Call Constable Dispatch at 713-755-7628

Vacation Watch registry (*2-week Notice*)...<http://pct1constable.net/sign-up/vacation-watch/>

Sign up for the Constable Office's Crime Alerts and Newsletter...<https://pct1constable.net>
select Sign-Up > Crime Alerts ; Newsletter



Thank you to our constables!

A big shout out to the constables who provided extra patrols while the power was out in our neighborhood following the storm in May.




Luxury Lawns
 Full Service Lawn Maintenance
 Custom Landscaping
and Irrigation
 Commercial - Residential
DAVID BARTULA
 713-688-4244
 LI # 7049



Your neighborhood expert.

Stephanie Pribble
 REALTOR®
 713.542.1730
 pribble@pribblegroup.com
 pribblegroup.com





Citizens Patrol

May 2024	
Total Driving Hours	14



HOME AUTO
UMBRELLA
INVESTMENT PROPERTIES
RENTERS

TRISH KYLE - AGENCY OWNER



☎ (832) 377-9280

🌐 <http://goosehead.com/Trish-Kyle>

✉ TRISH.KYLE@GOOSEHEAD.COM

📍 1334 BRITTMOORE ROAD #2318
HOUSTON, TEXAS 77043

IMPORTANT CONTACTS			POLICE / FIRE: 911	CITY HELPLINE: 311
Constable Dispatch 713-755-7628	HPD (non-emergency) 713-884-3131	Plaza Pulse Editor pulse@shepherdparkplaza.com	Plaza Pulse Advertising advertising@shepherdparkplaza.com	SPP Membership membership@shepherdparkplaza.com
Deed Restrictions 713-316-5255	Architecture Control 713-316-5255	Entrance Bed entrancebeds@shepherdparkplaza.com	Plaza Moms Rep plaza.moms.houston@gmail.com	Garden Club Rep gardenclub@shepherdparkplaza.com
Section 1 Rep Section2@shepherdparkplaza.com	Section 2 Rep Section2@shepherdparkplaza.com	Section 3 Rep 832-655-3425	Section 4 Rep Section4@shepherdparkplaza.com	SPP Civic Club president@shepherdparkplaza.com

SPP Calendar **June 2024**

Sunday	Monday	Tuesday	Wednesday	Thursday	Friday	Saturday
	1	2	3	4 	5	6
7	8	9 	10	11	12	13
14	15	16 	17	18 TREE WASTE	19	20
21	22	23 	24	25	26	27
28	29	30 	31			



By request of our collectors, please place bins in the street, not on the sidewalk/curb. Please leave 3 ft between your bins and any other objects. This gives the trucks room without damage to nearby items.

Reminder about Heavy Trash:
TREE waste is picked up in ODD months and **JUNK** waste in the EVEN months. **TREE** waste is defined as “clean” wood waste, such as tree limbs, branches, and stumps. **JUNK** is defined as items such as furniture, appliances, and other bulky material.

INDYQUEST PROPERTIES
YOUR DREAM IS OUR QUEST

Creston and Holly Inderrieden
BROKER | OWNERS

713.301.4054
WWW.INDYQUEST.NET

Cheerfully Serving Shepherd Park Plaza

HOUSTON
TOP REALTOR

TOP HOUSTON-AREA
RESIDENTIAL REAL
ESTATE SMALL TEAMS
BY SALES VOLUME

INDYQUEST PROPERTIES

2023

MAY Yard of the Month	
Section 1: 1010 Chamboard Ln Tony & Sooze Cisneros	Section 2: 939 Chantilly Ln Jennifer & Tommy Peterson
Section 3: 1023 Cheshire The Burton Residence	Section 4: 1107 Richelieu Rachelle Vento



THE PLAZA PULSE

SHEPHERD PARK PLAZA CIVIC CLUB

Shepherd Park Plaza Civic Club
P. O. Box 10453
Houston, TX 77206
www.ShepherdParkPlaza.com

PRSR STD
US POSTAGE
PAID
DMR, 77041

Ready to pay your annual Civic Club dues and
join the Constable Contract?
Pay via Venmo (@SPPCC) or scan the QR code!
Civic Club: \$25 Constable Program: \$325



Curious where your \$25 annual SPP Membership dues go?

We use these funds in numerous ways! Below are just a few...

- Street Number Curb Painting
- New Neighbor Welcome Packets
- Flower Beds at Entrances
- Plaza Pulse Newsletter and Website
- Yard of the Month and Decorating Awards
- Placement of US flag on light poles for national holidays