



# THE PLAZA PULSE

SHEPHERD PARK PLAZA CIVIC CLUB

July 2023

## BOARD OF DIRECTORS

### [Officers]

- President Davi Garza
- Vice President Carmen Busceme
- Secretary Kelly McNeill
- Treasurer Tom Caver

### [Committees]

- Advertising & Publicity Jessica Burton
- Architectural Control Darryl Rickaway
- Citizens Patrol Deborah De Bram
- City Liaison Deborah De Bram, Katherine Peale
- Communications Jesse Yoburn
- Constable Patrol Coordinator Bill Scheel
- Decorating Awards Angela Kelly
- Deed Restrictions Darryl Rickaway
- Entrance Bed Maintenance Mitch Sheaffer
- Greeters Amanda Huston, Joy Tober, Shannon Zierau, Fran Marino
- Historian Joy Tober
- Hospitality Jodi Boyd, John Garza, Rachel Mathews, Courtney Sheaffer, Kevin Simpson
- Membership Jesse Yoburn
- Plaza Pulse Traci Hahn

### [Representatives]

- Section 1 Rep. Kelley Sebesta
- Section 2 Rep. Sarah Suarez
- Section 3 Rep. Carmen Busceme
- Section 4 Rep. Grant Gauld
- Garden Club Rep. Davi Garza
- Plaza Moms Rep. Kate Riley



Share Your News!

Do you have an interesting story or news you want to share? Do you have ideas about content that you would like to see in future Plaza Pulse Newsletters?

We want to hear from you! Please let us know by emailing [Pulse@shepherdparkplaza.com](mailto:Pulse@shepherdparkplaza.com)

Deadline for submissions is the 15th of each month

*Neighborhood*

# 4TH OF JULY PARADE

**9:00AM Parade starts at Bethlehem & Apollo  
Followed by Kona Ice at Shepherd Park**

**Hosted by SPP Civic Club, CP Civic Club, & Plaza Moms**

Additional Parade Details and Map on Page 3

## Proposed Deed Restriction Amendment - Survey Results:

Hello neighbors,

Thank you so much to everyone who participated in the survey and sent emails in response to our desire to understand if the SPP homeowners are interested in prohibiting short-term rentals in our neighborhood. As promised, below are the survey results. Based on these results, the Civic Club will contact the real estate law firm it has been working with to discuss next steps. We anticipate this will take several months to work through so you may not hear from us regarding this issue until later in the year. In the meantime, if you would like to contact us about this issue please send an email to [deedrestrictamend@shepherdparkplaza.com](mailto:deedrestrictamend@shepherdparkplaza.com). Enjoy your summer!

The Civic Club Board SPP Section Directors

SPP Section	Total Survey Responses	YES, Prohibit Short Term Rentals	NO, Allow Short Term Rentals
1	73	63	10
2	80	69	11
3	67	65	2
4	50	48	2

## Shepherd Park Plaza Civic Club

### Welcome New Residents!

New to the neighborhood? Looking to connect and find out more information about the Shepherd Park Plaza neighborhood? Please contact our SPP Civic Club Board Greeters so we can welcome you officially! All new neighbors receive a welcome packet, so reach out to our neighborhood greeters if you haven't received yours.

### Going on vacation soon? Planning to be away from home for an extended time?

Be sure to sign up for the Constable Vacation Watch! Recommended to give a 2-week notice, if possible.  
<http://pct1constable.net/sign-up/vacation-watch/>

### Neighborhood Shout Outs!

Do you have an upcoming celebration? Do you want to give a special shout out of recognition or honor? \$25 will secure you a business card size space to highlight and share your news! All proceeds go to the SPP Constable Program fundraising. Send an email to [pulse@shepherdparkplaza.com](mailto:pulse@shepherdparkplaza.com) for any questions and content submission. Deadline for submissions is the 15th of each month. First paid, first published. Spaces limited to 4 shout outs per month.

### 4th of July Holiday Yard Decorating Awards

Show your patriotic spirit! Holiday yard decorating awards will be given for each section.

## In the Neighborhood

### City of Houston Drainage and Paving Project - REMINDER!

The City of Houston Garden Oaks and Shepherd Park (West) Drainage and Paving Project is continuing to progress. As a reminder - please be sure to take before / after pictures of your yard, should any issues arise.

<https://www.engagehouston.org/garden-oaks-shepherd-park-west>

Questions? Contact City of Houston [buildforward@houstontx.gov](mailto:buildforward@houstontx.gov) or 713.387.0311

Check out the Shepherd Park Plaza website for access to the Plaza Pulse online, as well as key documents, such as the New Neighbor Packet, membership and constable dues validation, and much more!  
<https://shepherdparkplaza.com>



Check out the Shepherd Park Plaza Facebook page for recent discussions, news, alerts, ideas, recommendations, and neighborhood events

Ready to pay your annual Civic Club dues and join the Constable Contract? You can pay by check, Venmo (@SPPCC), scan the provided QR code, or visit the link below. Checks should be made out to SPPCC and can be mailed to

SPPCC P.O. Box 10453 Houston, TX 77206.

Please include your name and address in the memo.

<https://shepherdparkplaza.com/dues>



Can't remember if you contributed? Check link online or email [Membership@shepherdparkplaza.com](mailto:Membership@shepherdparkplaza.com).

If you haven't received your Constable Program sticker, please contact your Section Rep.

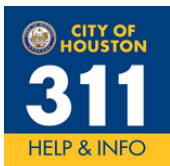
Civic Club: \$25 Constable Program: \$325

City of Houston Council Member, Abbie Kamin, represents the Shepherd Park Plaza neighborhood. Find out more how she represents District C, as well as FAQs at [www.houstontx.gov/council/c/](http://www.houstontx.gov/council/c/)



## We appreciate our local advertisers!

The local advertisers that you see throughout the Plaza Pulse help pay for the printing of our neighborhood newsletter. Please show your support and consider contacting one of these local businesses the next time you need a quote or service.



Street sign down? Traffic light blinking? Tree limb down over the street? The City of Houston has a dedicated phone line and app for these types of non-emergency related issues. Call 311 or 713-837-0311.



New to the neighborhood, new to motherhood, or just now feeling ready to join a mother's group? Plaza Moms Society is the place for you! We are a group of local moms that cultivates friendship and support for mothers in the Shepherd Park Plaza and Candlelight Plaza area. We have large scale family events like Holiday in the Park and smaller monthly 'mom night' events like Spa Night. We aim to foster a sense of camaraderie through our planned events, casual playdates, and online community.

We at Plaza Moms Society are busy planning an exciting 2023-2024 season. If you haven't yet, please visit us at [plazamomssociety.wildapricot.org](http://plazamomssociety.wildapricot.org) to sign up and get the latest information on events. Check us out on Facebook and Instagram too!

### Neighborhood 4th of July Parade details:

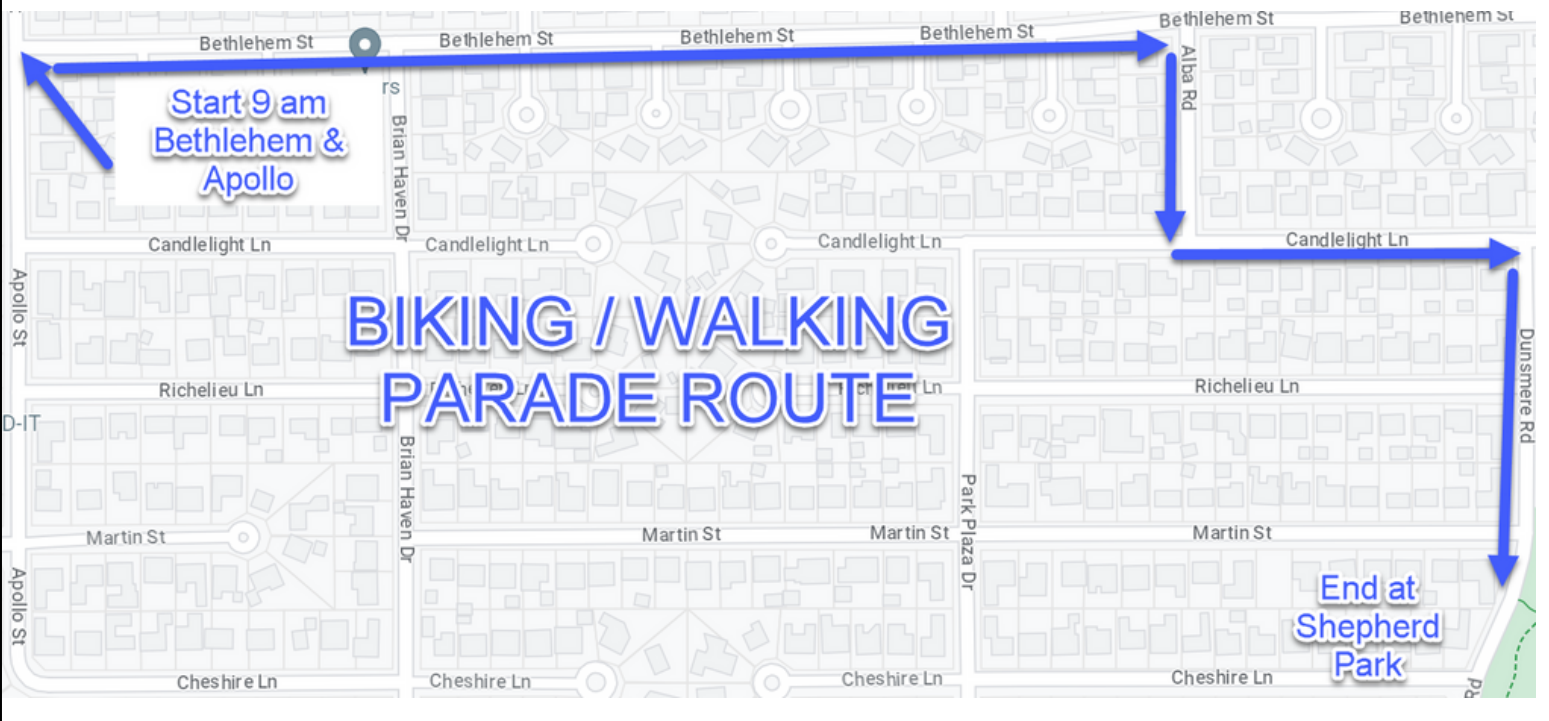
Please come dressed in your most patriotic gear! This includes decorating your bike, golf cart, and self! Don't forget your helmet!



Please be READY at the parade start by 8:45am to ensure you are included in the parade!



Parade order will be golf carts, bikes, then walkers and strollers. This allows for a smooth flow and pace.



**INDYQUEST PROPERTIES**  
YOUR DREAM IS OUR QUEST

*Creston and Holly Inderrieden*  
BROKER | OWNERS

713.301.4054  
WWW.INDYQUEST.NET

*Cheerfully Serving Shepherd Park Plaza*

THE LEADER READERS' CHOICE 2022

*Luxury Lawns*  
Full Service Lawn Maintenance  
Custom Landscaping  
and Irrigation  
Commercial - Residential  
**DAVID BARTULA**  
713-688-4244  
LI # 7049



The Plaza Garden Club meets on the second Monday of the month, September - May. Please contact [gardenclub@shepherdparkplaza.com](mailto:gardenclub@shepherdparkplaza.com) for details if you would like to join us in the fall! We would love to have you!

**Garden Club Member Yard of the Month**

The Plaza Garden Club Yard of the Month is the home of Maureen Sullivan. The garden features three large crepe myrtles which bring shade and color to the yard. The base of her garden are the evergreen shrubs of Indian hawthorn, Japanese ternstroemia, azaleas, and loropetalum. Textural interest is added with foxtail ferns, flax lilies, and Louisiana iris. Large plantings of seasonal color include hot pink pentas, white periwinkles, and yellow lantana. All are very attractive to pollinators. Beautiful garden, Maureen!



You're Invited...

**Durham ES**



**Summer Play Dates!**

**Location: Shepherd Park**

4722 Brinkman St, 77018

**Saturdays | 9:30 - 11am**

**June 10**

**July 22**

**August 19**

**Current and Incoming Families Welcome!**  
Light snacks provided.

**We can't wait to meet you!**

**Positive Interaction Program (PIP) -North Division**

Attended by Deborah De Bram and Katherine Peale

Guest Speaker : Desmine Allen, City of Houston Solid Waste Management Department, 713-422-3742

**Discussion Points:**

- Placement of containers – in street/gutter three feet apart and not blocked by obstacles.
- Extra black garbage containers can be purchased for an extra monthly fee.
- Green recycle containers are for recyclables only – put them directly in the green container, never grouped into any bags! Never junk or old clothes.
- Yard waste – place only in City-approved compostable bags. No more than 50 pounds and not mixed with other debris.
- Dead animal pick-up – call 311 – never put in garbage container.
- Heavy trash – if not picked up report to 311.
- Violation fines - \$50 - \$2,000.
- Builders/contractors or yard service contractors are responsible/must remove their debris - if they do not, take picture and report.
- Environmental Crimes Tip Line– 713-525-2728
- For neighborhood non-profit or civic club weekend campaign clean-up, send written request to SWMD at least 14 days before anticipated event.
- Slow pick-up - caused by lack of drivers – hiring now.

For solid waste information details - visit [www.houtonsolidwaste.org](http://www.houtonsolidwaste.org)



**Kristi Kolmetz**  
BROKER/OWNER

✉ [Kristi@KristiKolmetz.com](mailto:Kristi@KristiKolmetz.com)  
☎ 281.723.9801  
🌐 [oaksrealtytx.com](http://oaksrealtytx.com)

Shepherd Park Plaza neighbor

**LOW PRICES**

**FREE ESTIMATES**

**CHARLIE ROOFING**  
**HARDI SIDING**  
BBB 5 GOLD STAR RATING

**Office: 713-688-6463**

**Cell: 281-389-4654**

**Deputy Constable Program Response Calls**  
 \*Figures are for entire contract, including SPP and Candlelight Plaza\*  
 May 2023

CONTRACT CHECKS...268	MILES PATROLLED...4,185	MEET THE CITIZEN / OFFICER...1
VACATION WATCH...52	SOLICITORS...0	ALARM...3
BURGLARY...2	SUSPICIOUS PERSON...2	SUSPICIOUS VEHICLE...7
THEFT (OTHER)...1	WELFARE CHECK...1	INFORMATION CALL...0
FRAUDULENT USE ID...1	TRAFFIC...10	FOLLOW-UP...3
ACCIDENT (MINOR)...1	PARK CHECK...4	SPECIAL ASSIGNMENT...18

\*\*See Something, Say Something - Call Constable Dispatch at 713-755-7628\*\*  
 Vacation Watch registry (\*2-week Notice\*)...<http://pct1constable.net/sign-up/vacation-watch/>  
 Sign up for the Constable Office's Crime Alerts and Newsletter...<https://pct1constable.net>  
 select Sign-Up > Crime Alerts ; Newsletter

**North Shepherd District - May 2023 Meeting Report**

Discussion:

- Contact owners of Sears building site for info regarding development
- Investigate advantages and requirements of establishing Tax Increment Reinvestment Zone
- I-45 construction now estimated to reach NSD boundaries in 12 years.

Shepherd clean-up on 5/20/23 was a great success! Council member Abbie Kamin's office sent a representative, 2 churches sent volunteers, and volunteers from Garden Oaks and SPP participated as well. Much trash was cleaned up!

Next meeting - 6/15/23 at 6:15 PM. Wabash Feed and Garden.

**Neighbor,  
 Top 20 under 40  
 Realtor & Community  
 Advocate.**



[jessica@indyquest.net](mailto:jessica@indyquest.net) | 281-704-2061



**Clark/Kotzur  
 Team**



**Mike Clark** (SPP Resident)  
 713-906-4148  
[mike@clarkkotzurteam.com](mailto:mike@clarkkotzurteam.com)

**Debbie Kotzur**  
 713-822-4951  
[debbie@debbiekotzur.com](mailto:debbie@debbiekotzur.com)

**Custom Sugar Cookies**

for ALL occasions!



**BAKING BETTY**



@thebakingbetty  
 @\_baking\_betty

bakingbetty49@gmail.com  
 713-446-3847



**Your  
 neighborhood  
 expert.**

**Stephanie Pribble**  
 REALTOR®  
 713.542.1730  
[pribble@pribblegroup.com](mailto:pribble@pribblegroup.com)  
[pribblegroup.com](http://pribblegroup.com)



**COMPARE ELECTRICITY PLANS  
 FOR YOUR HOME  
 OR BUSINESS NOW!**

**BRANDY PRATT**  
 YOUR TRUSTED ENERGY PARTNER

832-523-0102

[brandy@prattpowerpartners.com](mailto:brandy@prattpowerpartners.com)



# Do Your Part, Be Water Smart

It only takes a moment.

A child or weak swimmer can drown in the time it takes to reply to a text, check a fishing line or apply sunscreen. Death and injury from drownings happen every day in home pools and hot tubs, at the beach or in oceans, lakes, rivers and streams, bathtubs, and even buckets.

Please keep you and your family safe during these warmer months.

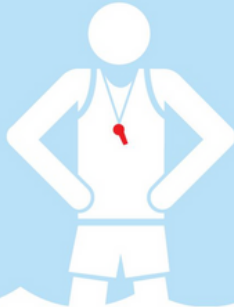
Source: Red Cross



**American  
Red Cross**

## Water Safety Tips

**Swim in designated areas supervised by lifeguards.**



**Always swim with a buddy.**



**If you go boating, wear a life jacket!**



**Install and use barriers around your home pool or hot tub.**



**Actively supervise children whenever around the water.**



**Reach or throw aid to distressed swimmers – don't go!**

**Always stay within arm's reach of young children and avoid distractions.**



**Keep toys not in use away from the pool and out of sight.**



Be water safe this summer. [redcross.org/watersafetytips](http://redcross.org/watersafetytips)

IMPORTANT CONTACTS			POLICE / FIRE: 911	CITY HELPLINE: 311
Constable Dispatch 713-755-7628	HPD (non-emergency) 713-884-3131	Plaza Pulse Editor pulse@shepherdparkplaza.com	Plaza Pulse Advertising advertising@shepherdparkplaza.com	SPP Membership membership@shepherdparkplaza.com
Deed Restrictions 713-316-5255	Architecture Control 713-316-5255	Entrance Bed entrancebeds@shepherdparkplaza.com	Plaza Moms Rep plaza.moms.houston@gmail.com	Garden Club Rep gardenclub@shepherdparkplaza.com
Section 1 Rep 713-882-8613	Section 2 Rep Section2@shepherdparkplaza.com	Section 3 Rep 832-655-3425	Section 4 Rep Section4@shepherdparkplaza.com	SPP Civic Club president@shepherdparkplaza.com

**SPP Calendar** **June 2023**

Sunday	Monday	Tuesday	Wednesday	Thursday	Friday	Saturday
						1
2	3	4 	5 	6	7	8
9	10	11 	12	13	14	15
16	17	18 	19	20 TREE WASTE	21	22
23	24	25 	26	27	28	29
30	31					

 =Trash     =Recycling



By request of our collectors, please place bins in the street, not on the sidewalk/curb. Please leave 3 ft between your bins and any other objects. This gives the trucks room without damage to nearby items.

**Reminder about Heavy Trash:**  
 TREE waste is picked up in ODD months and JUNK waste in the EVEN months. TREE waste is defined as “clean” wood waste, such as tree limbs, branches, and stumps. JUNK is defined as items such as furniture, appliances, and other bulky material.



**Plumbco** MPL#12248  
**Plumbing**  
 For all your Plumbing Installations & Repairs  
**713-721-PLUM (7586)**  
 Unstop Drains ★ Replace Sewer Lines ★ Tank & Tankless Water Heaters  
 Live Video Camera for Line Breaks ★ Repair and Replace Faucets & Toilets  
**Gary Bloch** Mention this ad for a \$10 discount.  
[www.plumbcohouston.com](http://www.plumbcohouston.com)

JUNE Yard of the Month	
Section 1: Corley & Elissa Walters 1110 Curtin	Section 2: Kimball Freeze & Natalia Matusz 1062 Chantilly
Section 3: Bruce Hill and Hal McNabb 1107 Martin	Section 4: Daniel & Carolyn Barrett 1119 Candlelight



# THE PLAZA PULSE

SHEPHERD PARK PLAZA CIVIC CLUB

Shepherd Park Plaza Civic Club  
P. O. Box 10453  
Houston, TX 77206  
www.ShepherdParkPlaza.com

PRSR STD  
US POSTAGE  
PAID  
DMR, 77041

Ready to pay your annual Civic Club dues and  
join the Constable Contract?

Pay via Venmo (@SPPCC) or scan the QR code!

Civic Club: \$25 Constable Program: \$325



## Curious where your \$25 annual SPP Membership dues go?

We use these funds in numerous ways! Below are just a few...

- Street Number Curb Painting
- New Neighbor Welcome Packets
- Flower Beds at Entrances
- Plaza Pulse Newsletter and Website
- Yard of the Month and Decorating Awards
- Placement of US flag on light poles for national holidays