



THE PLAZA PULSE

SHEPHERD PARK PLAZA



{CONTENTS}

October 2014

[Departments]

- Citizens Patrol
- Deputy Constable Patrol
- SPP Clubs
 - Men's Group
 - Plaza Moms Society
 - Garden Club
 - SPP Travelers

[Features]

- Constable Program Kickoff
- SPP Wine & Craft Beer Crawl
- Fall Holiday Decoration Judging Dates

[Reviews]

- Yards of the Month
- Around the Neighborhood
- Calendar
 - Important Dates
 - Numbers to Remember

Share Your News!

Please pass along any news of note about SPP residents so we can spotlight them in future issues of the Pulse.

If you have news to share, please let us know by emailing pulse@shepherdparkplaza.com or by contacting Romi Sandel at 713-962-4171.

Support SPP Safety Give to the Constable Program

This year's requested Constable Patrol contribution is \$200 per household. The visibility and authority provided the Constable Program helps deter potential crime. We all benefit through a safer **neighborhood, lower crime, and higher property values, and it's an investment worth making to keep SPP a wonderful and safe place to live!** We have also recently partnered with Candlelight Plaza (CP), to our north, for a combined Constable Patrol program with TWO patrollers! Rather than raise the recommended donation amount, we are hoping to increase participation, so your support is more important than ever! We are hoping to exceed 75%!

What do you get for \$200? Two full-time armed and uniformed deputy patrolling our neighborhood in a marked vehicle for a total of 80 hours per week. **Officers from the Constable's patrol division make numerous sweeps of SPP and CP when our assigned deputies are off-duty.**

Can you contribute in installments? We realize that a lump sum payment may not be feasible for everyone, so you are welcome to contribute in installments. You may do so by mailing periodic payments or by making online payments as you are able. However, we are not able to send reminders or bills, so we ask that you set up your own reminder **system that works for you. No donation is too small...even \$5 a month can make a difference!**

Please send your contribution today! The sooner we receive your \$200 contribution, the better able we are to budget for the coming year. **If you can't immediately afford the \$200, please send what you can—**contributions in any amount are welcome. In fact, we are now able to accept recurring contributions via PayPal at ShepherdParkPlaza.com. Or you may mail your contribution to SPPCC Membership Director, 1135 Riche-lieu.

Want to do MORE? Attend a neighborhood fundraising event! November—Wine & Craft Beer Crawl (details on p. 2 and on website) April—Annual Crawfish Boil, date tbd

Board of Directors

[Officers]

President Creston Inderrieden
Vice President Sarah Moseley
Secretary Romi Sandel
Treasurer Tom Caver

[Committees]

Architectural Control Darryl Rickaway
Citizens Patrol Karen Cruse
Constable Patrol Coordinator Karen Cruse
Deed Restrictions Darryl Rickaway
Entrance Bed Maintenance Monika Krause
Greeter Sheri Beasley
Historian Carol Jean Hebert
Hospitality Shannon Zierau, Leann Salmons
Membership Tom Dornak
Parks/DRT/PIP Liaison Ted Dwiggins
Publicity/Pulse Advertising
Laurie Rickaway
Website Publisher
Kirby Leshar, Aurelien Boucher

[Representatives]

Section 1 Rep. Dan & Jamie Kelly
Section 2 Rep. Jeff Davis
Section 3 Rep. Lori Kubin
Section 4 Rep. Orlando Romero
Garden Club Rep. Carol Jean Hebert
Plaza Moms Co-Rep.
Shannon Zierau, Megan Rasmussen

Men's Group Rep. Chuck Blesener

Pulse Editor: Emily Leffler
713-628-4210
pulse@shepherdparkplaza.com



New Citizen Patrollers Trained!

On Tuesday, August 26th, eleven of our neighbors were trained and certified by HPD to become additional Citizen Patrollers in the SPP neighborhood. They will soon be making the rounds on our streets to help keep our families and our homes safe from criminals. Join us in thanking them for their service -

Creston Inderrieden	Laura Webster	Mike Mateja
Michelle Ganter	Rick Zebrack	Dan Kelly
Darryl Rickaway	Steve Rogers	Jamie Elmore
Laurie Rickaway	Matt Pavlas	

Won't you join them? Contact Chuck Blesener at 713-683-9945, or ccbles77@gmail.com for more information on training.

SPP Wine & Craft Beer Crawl

Benefitting our Neighborhood Constable Program

Saturday, November 22, 4-6pm

\$50 per Adult / Kids are free!

Join us on Chantilly btwn Park Plaza and Clift Haven to taste some delicious wine and accompanying appetizers.

We have many new neighbors moving in all over Shepherd Park Plaza! Take time to welcome them and get to know them. Strong neighborhoods depend on strong neighbors!

August 2014 Citizens Patrol Stats

Patrol Hours *Prepared by Charli Merchant*

WEEK	Hours Patrolled
1	12.5
2	9.5
3	10.5
4	25
TOTAL	57.5

New Patrollers are Needed!! Contact **Karen Cruse** at 713-824-4799 or kjcfm4954@yahoo.com for information.

Training for Citizen Patrol certification is the second Tuesday of each month at 9455 West Montgomery at 7 pm. Anyone who regularly walks in the neighborhood is invited to join the COP group. More eyes on our neighborhood means more watching for suspicious activity.

The winner of the random \$10 gas bonus for July is **Chuck Blesener**.

Congratulations Chuck! Patrollers who turn in at least 5 hours by the 5th of the month are eligible for a random drawing for a \$10 gas card. Gift cards for accumulated driving hours will be distributed at the monthly meeting.

Get ready for Halloween!
Let our professional team do the decorating for you
Contact @HolidayDecoratingServices.com
HolidayDecoratingServices.com
619-738-5528



Capturing your special moments, parties & family portraits

\$60 for a 30-minute photo session
at your home or favorite outdoor setting

Book by 10/31/14 to take advantage of
this special introductory pricing... Perfect for holiday greeting cards!

Contact your neighbor Aurélien from Bouchet Images
(979) 341-9332 - bouchetimages.com - bouchetimages@gmail.com

Eileen Gamel Hartman
REALTOR®
713.305.5036
eileenhartman@kw.com
Kw METROPOLITAN
KELLER WILLIAMS, REALTY



Lived in SPP since 1982; Garden Club Member; Experienced in Residential sales. Interact with investors nationally & internationally.

Volunteer and Fund Raiser for the 100 Club, the Ronald McDonald House, the HLS&R, the Food Pantry at St. Rose of Lima and the TX Cattlewomen's Organization.

Fran Marino, Realtor®
Marino International Properties, LLC
713-530-5330 fran@franmarino.com
Realm Professional Realty, LLC-Galleria

MISSION
AIR CONDITIONING
\$35 OFF your Next A/C Repair
with this Ad (First Time Customers)
Repair - Installation - Maintenance

TA03.0710842 - Registered by the Texas Department of Licensing and Regulation PO Box 12171, Austin, TX 78711, 1-800-907-0032, 512-463-4999

CLARK/KOTZUR
REAL ESTATE TEAM
Mike Clark, Broker Assoc.
mike@clarkkotzurteam.com
713.906.4148 Cell
SPP Resident
Debbie Kotzur, REALTOR®
debbie@debbiekotzur.com
713.822.4951 Cell
RE/MAX Metro



August 2014

Arrests.....0
Alarm Responses..... 3
Contract Check..... 146
Information Calls 0
School Check..... 2
Park Checks..... 47
Open Door 1

Vacation Watch..... 51
Vehicle—Speeding..... 0
Parking Lot Check..... 0
Traffic Stop..... 7
Medical Emergency..... 2
Miles Patrolled..... 3,482

Meet the Citizen.....358
Welfare Check..... 4
Criminal Mischief..... 2
Home invasion..... 0
Suspicious Persons..... 14
Suspicious Vehicle..... 3
Animal (Humane) 0

Decorating Season is Here!!

Halloween Decoration Awards

Best Overall (1st & 2nd Place)
Most Original (1st & 2nd Place)
Scariest (1st & 2nd Place)

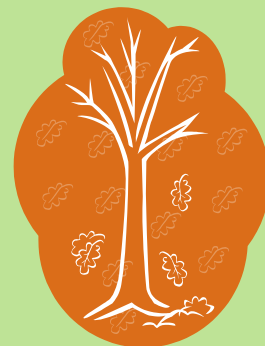
Autumn Decoration Awards

Best Overall (1st & 2nd Place)
Most Original (1st & 2nd Place)
Best Scarecrow (1st & 2nd Place)

Judging will be October 19



**Judging will be
November 8**



Garden
Club



More



Photos!



INDYQuest
PROPERTIES
 YOUR DREAM IS OUR Quest



"Creston and his entire team were a pleasure to work with. They diligently represented our interests, responded to our many requests and questions both quickly and professionally, provided in depth knowledge of Houston neighborhoods and did a great job walking us through every step of the home buying process. I would strongly recommend them to family and friends and plan to use them again for any future home purchases."

Bjorn K., Houston, TX

NOW OPEN AT:
 2902 N. Shepherd Dr., Ste F, Houston, TX 77008

CRESTON & HOLLY INDERRIEDEN
 CONTACT US TODAY AT: 713.301.4054 or creston@indyquest.net

HOGUE PLUMBING, INC.

Established in 1985

Chuck Hogue
 President

713-895-8733

P.O. Box 924734
 Houston, Texas 77292-4734
chuck.j.hogue@gmail.com



LOW PRICES

FREE ESTIMATES

CHARLIE ROOFING
HARDI SIDING
 BBB 5 GOLD STAR RATING

Office: 713-688-6463

Cell: 281-389-4654



**Farmer's Termite
 Management Services**

Over 30 years experience in the pest control industry.

713-681-2420

Free Estimates
Credit Cards
Insured

FARMER'S
Home Maintenance

Fence, Decks, Tile, Sheetrock, Painting, Fixtures

Luxury Lawns

Full Service Lawn Maintenance
 Custom Landscaping
 and Irrigation

Commercial - Residential

DAVID BARTULA

713-688-4244

LI # 7049



LEANN SALMONS
 BROKER ASSOCIATE

832-868-9453

lsalmons@marthaturner.com

Area Specialist

Circle of Excellence Award Winner

Certified Marketing Specialist

Lifelong Shepherd Park Plaza Resident

Martha Turner
 PROPERTIES

Hartman
 & ASSOCIATES

BILLY HARTMAN

713.305.5035

**It's not just my business,
 It's my neighborhood.**

Where do you want to live?

Plumbco
Plumbing

For all your Plumbing Installations & Repairs

713-725-5025

FREE Estimates MLP#17021

www.plumbcohouston.com

Important Numbers

Police/Fire: 911

City Helpline: 311

Citizens Patrol
713-824-4799

Deed Restrictions
713-316-5255

Plaza Moms
713-775-0307

New Neighbor/Greeter
713-688-5016

Garden Club
713-681-1552

Architectural Guidelines
713-316-5255

Plaza Pulse News
713-628-4210

SPP Historian
713-681-1552

Traffic & Safety
713-824-4799

Constable Dispatch
713-755-7628

SPP Membership
713-683-6502

City Liaison
713-688-7979

Pulse Advertising
713-688-0574 or 713-681-3600

Men's Group
713-683-9945

HPD
713-884-3131



SPP CALENDAR

Oct/Nov 2014



= Trash and Yard Waste

= Curbside Recycling

SUNDAY

MONDAY

TUESDAY

WEDNESDAY

THURSDAY

FRIDAY

SATURDAY

Reminder about Heavy Trash: Our heavy trash pickup is the <u>3rd Thursday</u> of each month. Tree waste is picked up in ODD months, and Junk waste in the EVEN months.			Oct 1 SPPCC Board	2 LADIES' NIGHT OUT	3	4
5	6	7 	8	9 SPP TRAVELERS	10 Men's Group	11 Durham Campus Beautification Day * 8-noon
12	13 Garden Club MEETING	14 	15	16 Heavy trash JUNK waste	17	18
19 Plaza Moms Fall Fest	20	21 	22	23	24	25
26	27	28 	29	30	31 	Nov 1
2	3	4 Election Day 	5 SPPCC Board	6 LADIES' NIGHT OUT	7	8
9	10 Plaza Moms Meeting	11 	12	13 Men's Group MEETING	14	15
16	17	18 	19	20 Heavy trash TREE waste	21	22



**October 19
4-6pm
Fall Fest in the Park**

Come enjoy Halloween fun and games at Shepherd Park! Kids (and parents!) are welcome to wear their costumes for a photo opportunity. Snacks and drinks will be provided. This event is free for current Plaza Moms members and \$10 for non-member families. Friends are welcome! There is no regular meeting this month.

Upcoming Events:

November 6—Ladies Night Out, 8pm

November 10—Monthly Meeting, 7pm

For more information and locations, join Plaza Moms! It's only \$35 for the year and gets you on our Facebook page as well as Big Tent. Contact us at plaza.moms.houston@gmail.com.



Men's Group

The Shepherd Park Plaza Men's Group will meet for their monthly luncheon on Friday, October 10th, at Spaghetti Western, 1608 Shepherd Drive, on the back porch. Note the date change because of a scheduling conflict with the bus trip on the 9th.

The group is open to all men of the neighborhood with no officers, no dues, and no rules. Just come when you can and enjoy good food, good conversation, and great neighbors. For more information on the group, contact Chuck Blesener at ccbles77@gmail.com or 713-683-9945.



Shepherd Park Plaza Travelers

The SPP Travelers are going to Galveston on Thursday, October 9th. After taking the bus on the ferry, they will enjoy a seafood lunch by the water at Stingaree in Crystal Beach. Back in Galveston the group will have a guided tour of the Texas Seaport Museum and the tall ship Elissa. Before departing for home they will stop on the Strand for a little dessert at La Kings Confectionery.

The groups next trip will be on Friday, December 5th to view Christmas lights by hayride in Ledbetter, and eat at the steakhouse in Carmine..

For more information about the SPP Travelers, contact Chuck Blesener at ccbles77@gmail.com or 713-683-9945. Chuck sends periodic emails to the Travelers group—send him an email if you'd like to be included in future messages.



Garden Club

The Shepherd Park Plaza Garden Club met on Monday, September 8, 2014 at the home of Colette Robichau.

This organizational meeting set the tone for a productive and contributory upcoming year. In addition to normal business functions, the group discussed their role in the upcoming SPP Fall Festival. The SPPGC will once again set up and coordinate the Dessert Table and they will donate a nice item to the Silent Auction. All funds raised by the Dessert Table will go to the beautification and upkeep of SPP.

A draft of the 2014 – 2015 Budget was reviewed. Dues were set. By Law Revisions were discussed and Lou Rice will work on these over the next month, so that she can present a proposed update at the October meeting. The Beautification Committee is busy reviewing and evaluating all areas of responsibility.

Yard of the Month were as follows: June – Shirley Correll, 1055 Martin, July – Barbara De Prato, 1112 Martin, August, Geraldine Lamonica Gurley, 1043 Martin and September – Carolyn Long, 1163 Chamboard.

Guests were Colleen Roberts and Dennis Woodward. Door Prizes were won by: Mebla Bruce, Barbara De Prato, Debbie Elliott, Susan Fitzpatrick, Carolyn Long, Fran Marino, Cindi Phelps, Lou Rice and Colleen Roberts.

The SPPGC's own Beth Galiano will speak on Seeds at next month's meeting which will be held on Monday, October 13, 2014, 7:00 p.m., at the home of Vicki Brandt, 979 Curtain.

Anyone interested in the Shepherd Park Plaza Garden Club is most welcome and encouraged to attend any meeting.

Garden Club meetings are held on the Second Monday of the month, September through May at 7:00 p.m.

*If you are interested please contact **Carol Jean Hebert** at (713) 681-1552 or CarolJeanHebert@yahoo.com for further details.*



The Garden Club's **September** Yard of the Month Award goes to:

Carolyn Long
1163 Chamboard



Shepherd Park Plaza Civic Club
P. O. Box 10453
Houston, TX 77206
www.ShepherdParkPlaza.com

PRSR STD
US POSTAGE
PAID
DMR, 77041

September Yards of the Month

Section 1:

1007 Curtin
David Uthe &
Florentino Liguden

Section 3:

4727 Brian Haven
Margaret Mock

Section 2:

1055 Chantilly
Jeff & Lauren Wall

Section 4:

Address
Name

SPP
Wants to Welcome You

New to the neighborhood?

Even if you are not-so-new, but haven't
gotten around to introducing yourself yet,
contact **Sheri Beasley**
at 713-688-5016
or MammaMia_54@yahoo.com
so we can welcome you officially.