



THE PLAZA PULSE

SHEPHERD PARK PLAZA CIVIC CLUB

{CONTENTS}

November 2012

FALL FESTIVAL PHOTO ALBUM

[Departments]

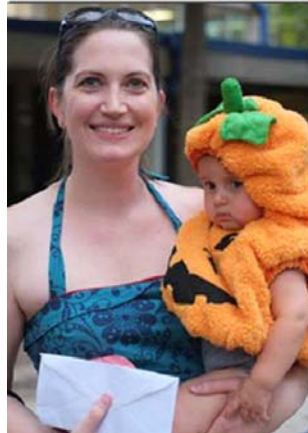
- Citizens Patrol
- Deputy Constable Patrol
- SPP Clubs
 - Men's Group
 - Plaza Moms Society
 - Garden Club
 - SPP Travelers

[Features]

- Fall Festival Photo Album
- Halloween Decoration Winners
- National Night Out Photo Album
- Citizen Patrol Changes
- Remember to Vote!
- Home Security Tips from the Citizen Patrollers

[Reviews]

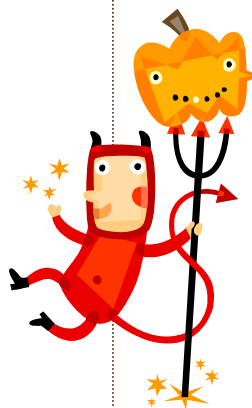
- Yards of the Month
- Around the Neighborhood
- What's Happening Around Houston
- Calendar
 - Important Dates
 - Numbers to Remember



Approximately 160 neighbors came out for the Shepherd Park Plaza Civic Club and Plaza Moms Fall Festival on October 13th at Durham Elementary.

Attendees enjoyed: dinner by Spaghetti Western, a variety of crafts and a coloring contest, a silent auction to benefit the SPP Garden Club, bounce houses, a cake raffle, face painting, Halloween costumes, and delicious Garden Club desserts.

Thanks to all of the volunteers who helped make the event a success!



Halloween Decoration Winners

- **Best Overall, 1st place:** 4707 Apollo | Christopher and Kimberly Schultea
- **Best Overall, 2nd place:** 1063 Thornton | Ricardo Calderoni
- **Scariest, 1st place:** 1028 Candlelight | Greg Walls and Nikki Bui
- **Scariest, 2nd place:** 1159 Curtin | Philip and Leann Salmons,
- **Most Original, 1st place:** 1118 Richelieu | Amy and Roberto Perez
- **Most Original 2nd place:** 1127 Thornton | Evonne Alford

BOARD OF DIRECTORS

[Officers]

President Romi Sandel

Vice President Darryl Rickaway

Secretary Sarrah Moseley

Treasurer Tom Caver

[Committees]

Architectural Control Creston Inderrieden

Citizens Patrol Karen Cruse

Constable Patrol Coordinator
Karen Cruse

Block Captain Coordinator Jennifer Lamb

Deed Restrictions
Billy Hartman

Entrance Bed Maintenance Monica Krause

Greeter Eileen Hartman

Historian Carol Jean Hebert

Hospitality
Caroline Marciano, Angie Gunden

Membership Tom Dornak

Parks/DRT/PIP Liaison Chuck Blesener

Publicity/Pulse Advertising
Laurie Rickaway

Website Publisher Kirby Leshner, Renee Botti

[Representatives]

Section 1 Rep. Dan & Jamie Kelly

Section 2 Rep. Sheri Beasley

Section 3 Rep. Lynn Myers

Section 4 Rep. Renee Botti

Garden Club Rep. Evonne Alford

Plaza Moms Co-Rep.
Emily Eldridge, Shannon Zierau

Men's Group Rep. Chuck Blesener

Pulse Editor: Emily Leffler
713-628-4210

Pulse Design: Paula Collins
713-594-5295
pulse@shepherdparkplaza.com



Thanks to all the neighbors who came out for National Night Out and to all our wonderful hosts!



Patrol Hours *Prepared by Charli Merchant*

WEEK	WALK/BIKE PATROL	AUTO PATROL	TOTAL HOURS
1	16.75	17	33.75
2	14.5	24.5	39
3	25	18	43
4	21.25	27.5	48.75
TOTAL	77.5	87	164.5

Interested in patrolling? Contact **Karen Cruse** at 713-824-4799 or kjcfm4954@yahoo.com for information.

Training for Citizen Patrol certification is the second Tuesday of each month at 9455 West Montgomery at 7 pm. Anyone who regularly walks in the neighborhood is invited to join the COP group. More eyes on our neighborhood means more watching for suspicious activity.

Winner of the random drawing for the \$10 gas bonus this month is Melba Bruce. To be eligible, auto patrollers must turn in at least 4 hours by the 5th of the month

Citizen Patrol Changes *By Chuck Blesener*

We recently learned that the Houston Police Department plans to discontinue its support of the walking and biking portions of the Citizen Patrol program. Additional details below were provided to us by Sgt. Frank Escobedo.

The change was initiated by the City Legal Department because of possible liabilities involved with the City's involvement and sponsorship of the program. The change has already been approved by City Council, the Mayor, and the Police Chief. It will not go into effect though until new training manuals are printed and that is expected to be sometime next year.

It is not too late to stop this change. There has not been a single incident or problem with walking or biking patrollers since the inception of the program. Almost half of our current patrollers are walkers and bikers. It is imperative we let the Mayor, City Council, and the Police Chief know that we are happy with the current program and do not want to see it changed. I urge you to write or email these officials and let them know how you feel.

Our Citizens Patrol works very well. Prior to initiating the program 21 years ago, we had an extremely high crime rate - almost a burglary per day. We have prevented an untold number of crimes in our neighborhood by our visibility on the streets and our calls for service. Safety is always our primary concern. If we feel it is unsafe to walk or bike on our streets, we will be the first ones to stop and seek help from HPD and the City to make changes. It is not necessary for the City to mandate those changes.

Our Deputy Constable Patrol has also helped tremendously in keeping crime down but he is only here forty hours each week. As we have seen recently, crime happens whether our deputy is on duty or not. We still need our Citizen Patrollers out on the street in their cars, on foot, or on bikes - watching, observing, and reporting suspicious persons and vehicles. Continue to patrol as you always have, put in more hours if you can, and if you are not a patroller - consider joining us. It is our neighborhood, our homes, and our families we are trying to protect.

Contact Information for our council member, mayor, and police chief.

District C Council Member

Ellen R Cohen

**900 Bagby, First Floor
Houston, TX 77002**

832-393-3004

district@houstontx.gov

Mayor

Annise D. Parker

**City of Houston
PO Box 1562
Houston, TX 77251**

713-837-0031

mayor@houstontx.gov

Chief Of Police

Charles A. McClelland Jr.

**1200 Travis St.
Houston, TX 77002**

713-884-3131

www.houstontx.gov/police/chief

**Remember to Vote!**

Election Day is Tuesday, November 6th and includes national, state and local issues. According to the Harris County Clerk's website as of October 16, 2012, the voting location for Shepherd Park Plaza residents is Durham Elementary on Brinkman. Visit the County Clerk's Election Division website at <http://www.harrisvotes.org/> for more information, including early voting locations and dates.

CALLS HANDLED BY DEPUTY CONSTABLE



SEPTEMBER 2012

Arrests..... 1
Alarm Responses 2
Citizen Contacts 136
Disturbances 2
Investigations 0

Park Checks..... 10
Vacation Watch 25
Misc. Calls 27
Dispatched Calls 12
Total Calls 201

Miles Patrolled... 934

Traffic:
Verbal/Written Warnings... 3
Citations... 0

What's Happening Around Houston *By Carol Jean Hebert*

Texas Renaissance Festival

The Texas Renaissance Festival is the nation's largest and most acclaimed Renaissance theme park where the sights, sounds, tastes and beauty of the 16th Century come alive for eight magically themed weekends. The Texas Renaissance Festival welcomes nearly half a million guests annually and features nearly 500 costumed performers on 17 stages, 400 shops including international food purveyors, unique artisans, merchants and craft vendors, human powered rides, an abundance of strolling performers and the Royal Finale at dusk.

With over two hundred daily performances and a cast of thousands, the Texas Renaissance Festival strives each year to bring the very best in renaissance themed entertainment. With the return of many festival favorites and the addition of Tobias the Adequate, Thomas Wood Pyro-Jugler, Vana MaZi and the LD Dance Company this 38th season promises to entertain all who enter the gates.

The Festival is held Saturdays, Sundays and Thanksgiving Friday. The Texas Renaissance Festival is located 50 miles northwest of Houston on more than 50 acres of beautifully landscaped grounds on FM 1774, between Magnolia and Plantersville. Parking is free.

Directions: Take I-45 north towards Conroe. Take Highway 105 West (left under the freeway) and follow 105 approximately 22 miles to Plantersville. In Plantersville, turn left on FM 1774 and go six miles to the Festival entrance. There are signs and officers directing traffic in Plantersville and at the Festival entrance.

Address & Contact: 21778 FM 1774, Todd Mission, Texas 77363 | 800-458-3435 | info@texrenfest.com | www.texrenfest.com

Dates & Times: October 6—November 25, 2012 | 9 am– 8 pm.




Pumpkin Pie Recipe


1 ½ cups pumpkin puree
(canned)
½ cup sugar
¼ cup honey
2 slightly beaten eggs

¼ tsp. salt
1 tsp. cinnamon
½ tsp. ground ginger
¼ tsp. ground cloves
¼ tsp. ground nutmeg

2/3 cup condensed milk
1 cup water
Uncooked pie/pastry shell

Combine all ingredients except pie shell. Note: Mixture will be very thin. Place pie shell in pie plate and press down gently. Pour mixture in pie plate. Cook at 425 degrees for 15 minutes. Cook at 350 degrees for an additional 45 minutes. Serve chilled with whipped topping.



INDYQuest
YOUR DREAM IS OUR Quest 

"Creston was honest and open with us from the beginning to the end of our listing. His warm personality made us feel comfortable and trusting. We were so fortunate to have him as our Realtor."

REALTY ASSOCIATES
1223 Antoine Drive
Houston, TX 77055

CRESTON & HOLLY INDERRIEDEN
CONTACT US TODAY AT: 713.301.4054 or creston@indyquest.net



Luxury Lawns
Full Service Lawn Maintenance
Custom Landscaping
and Irrigation
Commercial - Residential
DAVID BARTULA
713-688-4244
LI # 7049



Farmer's Termite Management Services
Over 30 years experience in the pest control industry.

713-681-2420 Free Estimates
Credit Cards Insured

FARMER'S Home Maintenance
Fence, Decks, Tile, Sheetrock, Painting, Fixtures



LEANN SALMONS
BROKER ASSOCIATE
832-868-9453
lsalmons@marthaturner.com

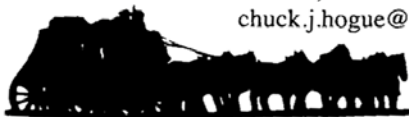
Area Specialist
Circle of Excellence Award Winner
Certified Marketing Specialist
Lifelong Shepherd Park Plaza Resident

Martha Turner
PROPERTIES

HOGUE PLUMBING, INC.
Established in 1985

Chuck Hogue
President
713-895-8733

P.O. Box 924734
Houston, Texas 77292-4734
chuck.j.hogue@gmail.com



★ $\sin^2\beta + \cos^2\beta = 1$

MR. STARR TUTORS MATH

4703 Clift Haven Dr.
Houston, Texas 77018-3219

Howard Starr
Retired Engineer &
Certified Math Teacher
Who's Who Among America's Teachers

H 713-957-8922
C 713-907-3689
howardstarr@sbcglobal.net
TAKS-SAT Algebra-PreCalculus

SPP Resident



Jan Clark, J.D.
REALTOR®
phone: 281-686-0761
e-mail: Jan@yourblvd.com

BOULEVARD REALTY

Plaza Neighbor... Area Specialist
Buying or selling a home soon? Call neighborhood specialist Jan Clark.

Plumbco Plumbing

For all your Plumbing Installations & Repairs
713-725-5025
FREE Estimates MLP#36609
www.plumbcohouston.com

IMPORTANT NUMBERS

POLICE/FIRE: 911

CITY HELPLINE: 311

Citizens Patrol
713-824-4799

Deed Restrictions
713-305-5035

Plaza Moms
713-775-0307 or 832-477-7871

New Neighbor/Greeter
713-305-5036

Garden Club
713-344-7013

CP Vacation Watch
713-682-5959

Architectural Guidelines
713-301-4054

Plaza Pulse News
713-628-4210

SPP Historian
713-681-1552

Traffic & Safety
713-824-4799

SPP Membership
713-683-6502

City Liaison
713-683-9945

Pulse Advertising
713-688-0574 or 713-681-3600

Men's Group
713-683-9945



SPP CALENDAR NOVEMBER 2012



= Trash and Yard Waste

= Curbside Recycling

SUNDAY

MONDAY

TUESDAY

WEDNESDAY

THURSDAY

FRIDAY

SATURDAY

A Note About Trash: You can legally put your heavy trash out at 6pm the Friday before your heavy trash day. Note that our heavy trash has been moved to the 3rd Thursday of each month (http://www.houstontx.gov/solidwaste/2012_heavytrashroute.html)				1	2	3				
 FALL BACK	4	5	 	6	7	8	9	10		
 VETERAN'S DAY	11	 Plaza Moms MEETING 	12	 	13	14	 Heavy trash TREE waste only	15	16	17
18	19		20	21	22			23	24	
25	26	 	27	28	29	30				

Home Security Tips from the Citizen Patrollers

- Lit porch lights deter crime.
- Keep gates closed.
- Lock your doors.
- If you have an alarm, be sure to set it.
- A well-kept yard shows that people are home and that they are mindful of their homes.
- Park cars in garages or behind gates to deter theft from vehicles.
- If you do not have SPP stickers on your vehicles, please get them.



Plaza Moms

November Meeting: November 12 at 7 pm
at the home of Emily Eldridge, 1003
Cheshire. This meeting will be a pot-luck
and recipe sharing gathering. Bring a dish of your favorite quick
dinner to share and share the recipe.



Men's Club

The Shepherd Park Plaza Men's Group will meet for
lunch and conversation at the Live Oak Grill, 10444

Hempstead @ Dacoma, on Thursday, November 8th at 11:
30. August Galiano will present an entertaining program and
the group will vote on their nominees for their annual John
Wayne Award.

Remember - you too can join the fun - no dues, no officers, and
no commitments. Call **Chuck Blesener** at 713-683-9945
or ccbles77@gmail.com for more information.



Garden Club

The October meeting of the SPP Garden Club was a
held in the home of **Sarrah Moseley**, and co-hosts/
hostesses were **Sheri Beasley**, **Robin McClung**, **Fran Marino**, and
Bob Warren and **Michael Pate**. Sarrah opened the beautifully
landscaped backyard of her home for the meeting, and filled it
with fall décor, lighting, and wonderful food. The program was
presented by John Stubbing from Clown Alley Orchids on the
growing and care of orchids. **Linda Morgan**, first vice-president,
presided over the short business meeting.

Poinsettia sales are going on now and orders will be taken until
the 3rd week of November. **Alice Bongers** is the contact.

The October yard-of-the-month was awarded to club president,
Evonne Alford, now **Evonne Sturm**, for the yard layout as well as
the bride and groom scarecrows and "just married" sign posted in
the yard.

The Garden Club held a silent auction at the Fall Festival, and this
fundraising project was in the skilled and experienced hands of
Monica Krause, assisted by 2nd vice-president **Corrinne
Oppermann** and other club members. Proceeds of this fundraiser
are earmarked for flower bed maintenance and updates.

The November meeting is always a special treat, and will be held
November 12 at 7 pm in the home of **Barbara Raines**, 1191
Chamboard. Guest speaker/demonstrator will be Darlene's
Flower Shop co-owner Susan Tate who always presents a creative
arrangement or two. The November meeting is customarily a
learning tool for the members and guests and a great preparation
for the upcoming holiday decorating season.

Vice president **Linda Morgan** and **Romi Sandel** are currently
working on the membership directory to be distributed at the
November meeting. Membership dues of \$20 must be paid in
order to be included in the new directory.

Emergency—911

Constable Dispatch—713-755-7628

HPD—713-884-3131

Clip & Save

Around the neighborhood

By Romi Sandel



In Memoriam—Kyle Eickenhorst, age 18, died October 11,
2012. Kyle lived on Chamboard and is survived by his
mother, **Dana Stoerkel**, sister **Kailey** and brother **Justin**.

► It's a girl!—**Gena and Dan Burke** of 1114 Thornton welcomed **Penelope Lynn Burke**, "Ellie," on October 10 at 10:33 am. She
weighed in at 6lbs, 11ozs, and was 20 inches long. Gena and Ellie are home now with Dad and proud big sister **Becca**.

► One of our neighbors has lost a precious item. A 1957 well-worn black Bible fell off the trunk of a car around Martin and Park Plaza. If
you have any information about this, please contact Billy Hartman billy@hartmanassociates.com.



THE PLAZA PULSE

SHEPHERD PARK PLAZA CIVIC CLUB

SHEPHERD PARK PLAZA CIVIC CLUB
P. O. Box 10453
HOUSTON, TX 77206
WWW.SHEPHERDPARKPLAZA.COM

PRSR STD
US POSTAGE
PAID
DMR, 77041

September YARDS OF THE MONTH

Section 1:

MARTHA QUINILLA
1187 CHAMBOARD

Section 3:

PAUL & LINDA GRIFFIN
1063 MARTIN

Section 2:

JOHN & KAY FRY
1042 THORNTON

Section 4:

LEN & RHONDA D'ERAMO
1064 CANDLELIGHT

SPP

Wants to Welcome You

Thanks to **Spaghetti Western**, 1608 Shepherd Drive (713) 861-1313, who graciously donated gift certificates for our newest neighbors.

<http://www.spagwesthouston.com/>.

New to the neighborhood? Even if you are not-so-new, but haven't gotten around to introducing yourself yet, contact **Eileen Hartman** at 713-305-5036 or Eileen@hartmanassociates.com so we can welcome you officially.

EILEEN HARTMAN

OWNER/REALTOR

CELL: 713.305.5036

Hartman
& ASSOCIATES

*Help me help
Durham Library!*

For each transaction closed in Shepherd Park Plaza, I will make a donation to the library at our neighborhood school.



LOW PRICES

FREE ESTIMATES

CHARLIE ROOFING
HARDI SIDING
BBB 5 GOLD STAR RATING

Office: 713-688-6463

Cell: 281-389-4654