



THE PLAZA PULSE

SHEPHERD PARK PLAZA CIVIC CLUB

{CONTENTS}

March 2013

[Departments]

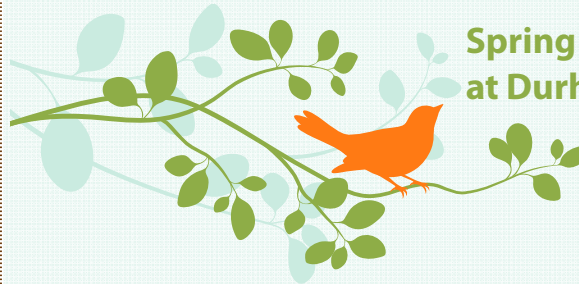
- Citizens Patrol
- Deputy Constable Patrol
- SPP Clubs
 - Men's Group
 - Plaza Moms Society
 - Garden Club
 - SPP Travelers

[Features]

- Spring Fling Set for March 23rd at Durham Elementary
- Plaza Moms Annual Easter Egg Hunt
- SPP Spring Garage Sale—April 13
- Update on Emily's Compost Pile
- Talkin' Trash!
- Safety Tips from COP
- Spring is in the Air—Save these Dates

[Reviews]

- Yards of the Month
- Around the Neighborhood
- What's Happening Around Houston?
- Calendar
 - Important Dates
 - Numbers to Remember



Spring Fling Set for March 23rd at Durham Elementary

Save the date and plan to attend SPPCC's semi-annual membership meeting! This is your chance to elect the 2013-2014 SPPCC board, learn about issues affecting our neighborhood, and sign up to participate in neighborhood organizations including Citizens Patrol, Plaza Moms, Men's Group, and Garden Club. You can also hear about what the SPPCC Board has done during the past year, pay your annual Civic Club dues, make a contribution to the Constable Program, and much more! Don't forget the annual silent auction. All funds raised in the auction will support our neighborhood and various improvement efforts.

Watch for more details coming to your front porch or e-mail inbox soon!

Schedule of Events:

- 6 pm— Event begins; silent auction opens
- 6:30 pm— Dinner, catered by Zierau Fine Foods (SPP residents **Shannon and Andreas Zierau**)
- 7 pm – Membership meeting begins
- 8 pm – Silent auction closes, event ends



SPP Spring Garage Sale April 13 *by Patricia Dornak*

Shepherd Park Plaza is coordinating our 3rd Neighborhood Garage Sale for Saturday, April 13 from 8 am to noon. A rain date is planned this year for the following Saturday, April 20. This event has had favorable participation from our residents over the last two neighborhood garage sale events. Advertising will run in numerous publications, all done by the Civic Club. Like the last SPP Garage Sale in the Fall of 2012, all the residents participating will get their locations published (block number only) in the advertised publications. A handout map with addresses will also be generated and distributed at garage sales to help guide shoppers through the neighborhood.

Our neighbors in Candlelight Plaza will also be participating this year. As in the past, for residents wanting to donate unsold items, a nonprofit organization providing assistance to the needy in our part of Houston, MANNA (Ministry Assistance of the Near Northwest Alliance), located on 43rd at Rosslyn will pick up your unwanted items beginning at 1 pm. Please contact **Patricia Dornak** at Pdornak@gmail.com by April 6 if you plan to participate and get your address included in the publications.

BOARD OF DIRECTORS

[Officers]

President Romi Sandel

Vice President Darryl Rickaway

Secretary Sarrah Moseley

Treasurer Tom Caver

[Committees]

Architectural Control Creston Inderrieden

Citizens Patrol Karen Cruse

Constable Patrol Coordinator

Karen Cruse

Block Captain Coordinator Jennifer Lamb

Deed Restrictions

Billy Hartman

Entrance Bed Maintenance Monica Krause

Greeter Eileen Hartman

Historian Carol Jean Hebert

Hospitality

Caroline Marciano, Angie Gunden

Membership Tom Dornak

Parks/DRT/PIP Liaison Chuck Blesener

Publicity/Pulse Advertising

Laurie Rickaway

Website Publisher Kirby Leshner, Renee Botti

[Representatives]

Section 1 Rep. Dan & Jamie Kelly

Section 2 Rep. Sheri Beasley

Section 3 Rep. Lynn Myers

Section 4 Rep. Renee Botti

Garden Club Rep. Evonne Alford

Plaza Moms Co-Rep.

Emily Eldridge, Shannon Zierau

Men's Group Rep. Chuck Blesener

Pulse Editor: Emily Leffler
713-628-4210

Pulse Design: Paula Collins
713-594-5295
pulse@shepherdparkplaza.com

Update on Emily's Compost Pile

Now, I know what you are all thinking. Seriously? Of all the topics covered in the *Pulse*, this one gets turned into a series? But in case you make a practice of reading the *Pulse* around the dinner table the moment it arrives, I know you've been dying to know what happened once I took a hoe to the gourds in my pile. And if you missed last month's article, boy I'll bet you are wondering what it was about given the previous sentence.

Well lo and behold, those pumpkin seeds took right to that rich soil and sprouted almost immediately! Check out the progress just in the past four weeks. I also found a small snake living inside one of the hollowed out gourds, but since I already had a hoe in my

hands and my three-year old was standing nearby, the snake had little opportunity to escape. Dust to dust—sorry Mr. Snake.



Talking Trash! *By Chuck Blesener and Emily Leffler*

First of all, the *Pulse* Editor would like to apologize for incorrectly printing TWO trash pickup holidays (I believe they were New Year's Day week and MLK Holiday week are the ones I missed.) I do sincerely apologize, and please know that I cringe when I see all your lovely bins lined up on the curbs one day early due to my bad advice!

Nevertheless, assuming I've told you the correct day for pickup, here are some reminders Chuck and I would like to share with you about trash pickup:

- Our regular collection day is Tuesday, and trash can be placed on the curb for pickup no earlier than 6pm on Monday. This includes our rolling bins as well as bags of lawn clippings.
- When you place your bins, be sure they are curbside (not in the street) and placed at least three feet apart
- Lawn clippings must be bagged in the approved clear, biodegradable bags with the city-approved logo. If you pay a lawn service to bag your clippings, they are responsible for removing them from your property. Please do not leave lawn clipping bags or bundles on the curb beyond the Monday 6pm through Tuesday time frame. Alternatively, see last month's *Pulse* for an article on composting!
- Heavy trash collection has recently changed. It is now the third Thursday of each month. Tree waste is collected in the odd numbered months and junk waste is collected in the even numbered months.

One more note about recycling... our bin typically contains quite a few (ahem) glass containers, and occasionally, one will roll out of the bin in the process of its being lifted to be emptied into the truck, thus smashing on the street below. If this happens to you, too, please sweep up the broken glass as soon as possible for the sake of drivers, bikers, sandal-wearing walkers, bare-pawed puppies, etc.

Patrol Hours *Prepared by Charli Merchant*

WEEK	HOURS PATROLLED
1	28.25
2	22
3	24.5
4	36
TOTAL	110.75

Interested in patrolling? Contact **Karen Cruse** at 713-824-4799 or kjcfm4954@yahoo.com for information.

Training for Citizen Patrol certification is the second Tuesday of each month at 9455 West Montgomery at 7 pm. Anyone who regularly walks in the neighborhood is invited to join the COP group. More eyes on our neighborhood means more watching for suspicious activity.

Winner of the random drawing for the \$10 gas bonus this month is **Ernie Gessner**. To be eligible, auto patrollers must turn in at least 4 hours by the 5th of the month. Gift cards for accumulated driving hours will be distributed at the next meeting, and names will be published after that.

Safety Tips from the Citizens on Patrol

- Daylight Saving Time begins March 10, but until then, please do what you can to turn on your porch lights in the evenings to deter criminal activity. Our patrollers observe many streets are quite dark, and the streetlights often do not provide enough light.
- Be aware of your surroundings, wherever you are.
- Keep gates closed and put cars in the garage if you can. If cars are in driveway, lock them, and be sure no valuables are left, especially in sight. (purses, computers, phones, wallets in consoles; AND no ID's, credit cards, bank receipts, check books should be left in car, ever).

Spring is in the Air**Save the Dates for Some Upcoming Outdoor Activities**

- April 6—Cleanup Day in Shepherd Park
- April 13—SPP Annual All-Neighborhood Garage Sale

**Plaza Moms Annual Easter Egg Hunt**

Hop on over to Shepherd Park March 23 at 11 am for the **Annual Plaza Moms Easter Egg Hunt!** The egg hunt will begin at 11:15 am (with a specially designated hunt area for our toddler hunters) and Easter Bunny to arrive by 11:30 am for pictures. Food, drinks, and Easter bags will be provided for our hunters, gathers, and parents.

This event is open to Plaza Moms members and non-members (\$10 for non-members). Rain date is the next Saturday March 30 at 11am, also at Shepherd Park .

GARDENING TIP OF THE MONTH: This came from Dianne Norman at Wabash Feed Store in her presentation to the Garden Club. For raised bed gardening: prepare the area by cleaning the space of grass, etc; place newspapers over the ground; get a soil test; apply humate and dry molasses to soil. The measurement formula for soil needed is length **X width X depth (in inches) divided by 324 = # of cubic yards of soil needed**. The soil you purchase needs to come from a reputable source, and should not contain raw pieces of wood or other un-composted material. "Raw" soil will result in plant roots dying from tannic acid as the raw wood products break down.

CALLS HANDLED BY DEPUTY CONSTABLE



JANUARY 2013

Arrests..... 2
Alarm Responses 11
Citizen Contacts 92
Disturbances 0
Investigations 9

Park Checks..... 22
Vacation Watch 5
Misc. Calls 24
Dispatched Calls 38
Total Calls 196

Miles Patrolled... 1117

Traffic:

Verbal/Written Warnings... 5
Citations... 1

What's Happening Around Houston?

The Grand 1894 Opera House in Galveston

The Grand has a very special place in the history of the Galveston community and in the lives of many of the residents. It survived the storms of 1900 and 1915, and Hurricanes Carla, Alicia and Ike, as well as years of neglect at various times throughout its history. Of these events, the greatest threat to its survival was the 1900 storm, and it remains a testament to the determination of the people of Galveston that The Grand was quickly repaired and reopened.

The Grand is one of the few remaining theatres of its era in Texas and is listed in the National Register of Historic Places. As further recognition of its importance to the citizens of Texas, in 1993 the 73rd Texas Legislature proclaimed The Grand "The Official Opera House of Texas." Galvestonians exhibited great vision in 1894 when they undertook to support the arts in Galveston by construction of The Grand. A later generation of Galvestonians renewed that commitment with equal vision when they undertook to save and restore The Grand in 1974.



THE GRAND 1894 OPERA HOUSE

2020 Postoffice Street, Galveston, Texas 77550

Phone: 800-821-1894 | 409-763-7173

Email: tickets@thegrand.com

Thegrand.com



INDYQuest

YOUR DREAM IS OUR Quest



"We can't say enough positive things about Creston and the IndyQuest team. They gave us 100% throughout the entire process explaining all of the fine print. If you are looking for the best Agents in Houston, you found them. We highly recommend them whether it is your first time or 100th time buying. They are professional, punctual, courteous, and simply the best."

--Josh and Jennifer L., Houston, TX

REALTY ASSOCIATES
1223 Antoine Drive
Houston, TX 77055

CRESTON & HOLLY INDERRIEDEN

CONTACT US TODAY AT: 713.301.4054 or creston@indyquest.net

LOW PRICES

FREE ESTIMATES

CHARLIE ROOFING
HARDI SIDING
BBB 5 GOLD STAR RATING

Office: 713-688-6463

Cell: 281-389-4654



LEANN SALMONS
BROKER ASSOCIATE
832-868-9453
lsalmons@marthaturner.com

Area Specialist
Circle of Excellence Award Winner
Certified Marketing Specialist
Lifelong Shepherd Park Plaza Resident

Martha Turner
PROPERTIES

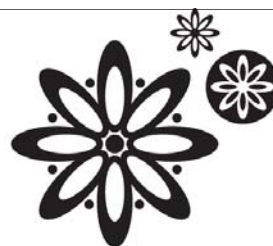
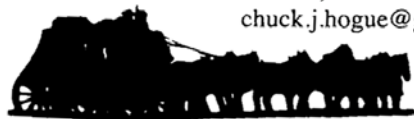
HOGUE PLUMBING, INC.

Established in 1985

Chuck Hogue
President

713-895-8733

P.O. Box 924734
Houston, Texas 77292-4734
chuck.j.hogue@gmail.com



The Posh Petal

FLOWER ARTISTRY

2126 W. 34th Street • Houston, Texas 77018
www.poshpetal.net



NEW COMPANY, SAME
EXPERTISE & EXPERIENCE

EILEEN HARTMAN
713.305.5036
eileen@greenwoodking.com

**GREENWOOD KING
PROPERTIES**
www.greenwoodking.com

Plumbco
Plumbing
For all your Plumbing Installations & Repairs
713-725-5025
FREE Estimates MLP#36609
www.plumbcohouston.com

IMPORTANT NUMBERS

POLICE/FIRE: 911

CITY HELPLINE: 311

Citizens Patrol
713-824-4799

Deed Restrictions
713-305-5035

Plaza Moms
713-775-0307 or 832-477-7871

New Neighbor/Greeter
713-305-5036

Garden Club
713-344-7013

CP Vacation Watch
713-682-5959

Architectural Guidelines
713-301-4054

Plaza Pulse News
713-628-4210

SPP Historian
713-681-1552

Traffic & Safety
713-824-4799

SPP Membership
713-683-6502

City Liaison
713-683-9945

Pulse Advertising
713-688-0574 or 713-681-3600

Men's Group
713-683-9945



SPP CALENDAR

MARCH 2013



= Trash and Yard Waste

= Curbside Recycling

SUNDAY

MONDAY

TUESDAY

WEDNESDAY

THURSDAY

FRIDAY

SATURDAY

A Note About Trash: You can legally put your heavy trash out at 6pm the Friday before your heavy trash day. Note that our heavy trash has been moved to the 3rd Thursday of each month (http://www.houstontx.gov/solidwaste/2012_heavytrashroute.html).					1	2		
3	4	 	5	6	7	8	9	
	10	 	11	12	13	14	15	16
								
	17	 	18	19	20	21	22	SPPCC Spring Fling!
Easter Decorations Judging			Plaza Moms MEETING	First Day of Spring		Heavy trash TREE waste only		
	24	25	 	26	27	28	29	30
	31		Plaza Moms NIGHT OUT					

Emergency—911

Constable Dispatch—713-755-7628

HPD—713-884-3131

Clip & Save

Share Your News—Please pass along any news of note about SPP residents so that we can spotlight them in future issues of the *Pulse*. If you have news to share, please let us know by emailing pulse@shepherdparkplaza.com or contacting **Romi Sandel** at 713-962-4171.



March 19—7 pm, Monthly meeting at the home of **Lynn Myers**, 1035 Cheshire
March 23—11 am, Annual Easter Egg Hunt (see article in the *Pulse*.)

March 25—8 pm, Ladies Night Out at the Boom Boom Room.



Men's Club

The Shepherd Park Plaza Men's Group had a great turnout this month with a few new faces at the table. It was Valentines Day and **August Galiano** provided the candy. You too can join the group for some enlightened and entertaining conversation with friendly neighbors. The group will meet this month on the back porch at Spaghetti Western, 1608 Shepherd Drive, Thursday, March 14, at 11:30 am. For more information contact **Chuck Blesener** at ccbles77@gmail.com or 713-683-9945.



Shepherd Park Plaza Travelers

Our merry band of travelers will be Central Texas bound on a Precinct Four bus on Thursday, April 18. They will tour four of Texas' historic painted churches and have lunch at the Oakridge Smokehouse in Schulenburg. The trips are open to all residents and their friends over the age of 50. For more information contact **Chuck Blesener** at ccbles77@gmail.com or 713-683-9945.

Car around the neighborhood

By Romi Sandel



Anyone who steps outside the house for more than 10 minutes can tell we have lots of runners in Shepherd Park Plaza! Many of them, I'm sure, participated in the Houston marathon in February. Congratulations to you all, and thanks to the Garcia Family of 1009 Martin who all ran the half marathon and all set personal best records despite the cold wet weather. The family is particularly proud of son Cameron, who finished his first half marathon in record time of 1:46.



Garden Club

The February meeting of the Shepherd Park Plaza Garden Club was held February 11 in the home of

Evonne Alford Sturm with a total attendance of 32 for the program and meeting. Hearts, flowers, and lots of hugs were shared by attendees, as well as a delicious baked potato bar, salad, and multiple desserts prepared by co-hostesses **Corinne Oppermann, Bess Moseley, Susan Fitzpatrick, and Colette Robichau**.

Guest speaker for the meeting was Dianne Norman from Wabash Antiques and Feed Store. Dianne discussed all aspects of raised bed gardening, with emphasis on organic vegetables. Soil, soil testing, preparation and treatment of the soil, all were of great interest to the members. Dianne prepared a wonderful hand-out for the presentation which included websites and reference sources and further research.

Yard-Of-The Month for February was announced by **Robin McClung** and the recipient is **Cindy Wolfram** at 4507 Apollo.

The Beautification Committee, under chairman **Sarrah Moseley**, reported to the membership recommendations for upcoming projects, maintenance, and long term care of flower beds within the neighborhood. The Garden Club will to continue to maintain the Thornton/Ella entrance beds; the beds located in Shepherd Park; and the JoAnn Payne Memorial Garden. Work will begin this weekend on these projects. These beds will be thoroughly cleaned and replanted and should look good for springtime. The Garden Club will hold the silent auction at the Fall Fling as a source of funds for these and other projects.

The March meeting is scheduled for March 11, 7 pm, at the home of **Romi Sandel**, 1057 Martin. The March meeting traditionally is the fundraiser called the "Brown Bag." Each member will bring a donated item, and raffle tickets will be purchased and placed in a "Brown Bag" for a drawing to win the prize. Always a favorite meeting of the club, great food and great fun are a big part of this meeting. A nominating committee for officers for the 2013/2014 term will be nominated and elected at the March meeting as well, with actual election of officers to follow at the April meeting.

2nd Vice-President **Corinne Oppermann** is planning the installation dinner in May for the new board, and the evening is planned for the new Ella location of Frieda's Mexican Cantina.

Guests are always welcome, and membership is open to both men and women interested in gardening, neighborliness, civic improvement, and the beautification of homes and gardens in the neighborhood.

Easter Decorations Judging March 17





THE PLAZA PULSE

SHEPHERD PARK PLAZA CIVIC CLUB

SHEPHERD PARK PLAZA CIVIC CLUB
P. O. Box 10453
HOUSTON, TX 77206
WWW.SHEPHERDPARKPLAZA.COM

PRSR STD
US POSTAGE
PAID
DMR, 77041

The *Plaza Pulse* is looking for a new Design Editor to take over the *Pulse* layout & print coordination. If you've got the skills and you're looking for a fun way to get involved and volunteer in SPP, please contact either **Paula Collins** 713.594.5295 or **Emily Leffler** 713-628-4210 for details.

JANUARY YARDS OF THE MONTH

Section 1:

1015 CHAMBOARD
EDWARD & LYNN HERRERA

Section 3:

1104 CHESHIRE
ADOLH & JANICE BENYS

Section 2:

1018 CHANTILLY LN.
BETSY COMSTOCK

Section 4:

1041 RICHELIEU
VASTINE & EDDIE MAE
HIGHTOWER

SPP

Wants to Welcome You

Thanks to **Spaghetti Western**, 1608 Shepherd Drive (713) 861-1313, who graciously donated gift certificates for our newest neighbors.
<http://www.spagwesthouston.com/>.

New to the neighborhood? Even if you are not-so-new, but haven't gotten around to introducing yourself yet, contact **Eileen Hartman** at 713-305-5036 or Eileen@greenwoodking.com so we can welcome you officially.



Farmer's Termite Management Services

Over 30 years experience in the pest control industry.

713-681-2420

Free Estimates
Credit Cards
Insured

FARMER'S Home Maintenance

Fence, Decks, Tile, Sheetrock, Painting, Fixtures