



THE PLAZA PULSE

SHEPHERD PARK PLAZA CIVIC CLUB

{CONTENTS}

December 2013

[Departments]

- Citizens Patrol
- Deputy Constable Patrol
- SPP Clubs
 - Men's Group
 - Plaza Moms Society
 - Garden Club
 - SPP Travelers

[Features]

- Holiday Decoration Awards Descriptions
- Halloween and Autumn Decoration Awards
- Durham Principal's Corner
- Recycling Rules!

[Reviews]

- Yards of the Month
- Around the Neighborhood
- Calendar
 - Important Dates
 - Numbers to Remember

Share Your News!

Please pass along any news of note about SPP residents so we can spotlight them in future issues of the Pulse.

If you have news to share, please let us know by emailing pulse@shepherdparkplaza.com or by contacting Romi Sandel at 713-962-4171.



Time to Light it Up, Shepherd Park Plaza!

The holidays are upon us, and there's no place like SPP for lights and excitement!

Below is a list of potential awards for various displays—I hope you've been planning ahead.

For those of you who might be intimidated by the idea of an award, please don't be! Remember, quantity counts, too! The more houses we have with even a small amount of lights and décor, the better!

JUDGING TO OCCUR SUNDAY AND MONDAY, DECEMBER 15 AND 16

Best Overall—Contains a bit of everything; does not necessarily have a theme, but must combine elements of religious, traditional display, and Christmas lighting. Best overall includes door and/or window decorations.

Best Religious—Devoted strictly to a religious theme/design, Manger scene displays, Chanukah displays, Angels, stained glass windows, doves, painted verses from religious texts, religious music/carols, decorative lighting and flood lights.

Most Original—Best design solution— religious, traditional, novelty or lighting— presenting original artwork, theme design, storytelling, automation, and not generally typical of other designs or displays.

Best Traditional—Devoted to traditional Christmas themes, i.e., Santa Claus, Ms. Claus, reindeer, sleighs, snowmen, toys, Christmas trees, garland, tinsel, wrapped/ painted Christmas packages, poinsettias, wreaths, lighting, ornaments and flood lighting.

Best Novelty—Decorations, cutout displays/characters other than "strictly religious" identified under Best Religious Display, i.e., cartoon characters, toys, fairy tale characters, Santas, Christmas trees, Christmas decorations, Christmas packages, signs, churches, lights, garland, flood lights, etc.

Best Lighting—Décor limited entirely to Christmas lights on the house, roof, in trees, and in the yard, illuminated Christmas characters such as Santas, toy soldiers, snowmen, wreaths and similar lighted items, flood lighting, and illuminated/decorated Christmas trees.

Best Door—Display can be religious, traditional or novelty theme. Should be the predominate feature of an overall Christmas decoration or design.

Best Window(s)—Same as for best door display except award can be given for a single window or group of windows.

Best Street or Cul-de-sac—This award is for groups of 10 or more neighboring homes (i.e. on the same street or cul-de-sac) participating in a collective theme. No restriction as to the type/amount of decorations and lighting. Individual homes in the group are still eligible for individual Christmas decoration awards.

~~~~~  
*After winners in the above categories are chosen, the following categories are judged by Section Representatives. Homes that have already received an award are not eligible in these categories:*

**Section Favorites**—One Section Favorite award to be selected by each section representative in the four SPP sections. See a map of sections on our website, [ShepherdParkPlaza.com](http://ShepherdParkPlaza.com).

**Children's Favorites**—One Children's Favorite award to be selected in each of the four SPP sections by two children (age 6-12 years) in each section. Section representatives will choose the child judges for each section. The chosen winner will be the best house/yard display or favorite as perceived by the child judges. Note: Judges have the discretion to recognize only one winner per category if participation within a category is limited. No home may receive more than one award.

## BOARD OF DIRECTORS

### [Officers]

**President** Romi Sandel

**Vice President** Creston Inderrieden

**Secretary** Sarrah Moseley

**Treasurer** Tom Caver

### [Committees]

**Architectural Control** Darryl Rickaway

**Citizens Patrol** Karen Cruse

**Constable Patrol Coordinator** Karen Cruse

**Deed Restrictions** Darryl Rickaway

**Entrance Bed Maintenance** Monica Krause

**Greeter** Evonne Alford Sturm

**Historian** Carol Jean Hebert

**Hospitality** Shannon Zierau

**Membership** Tom Dornak

**Parks/DRT/PIP Liaison** Chuck Blesener

**Publicity/Pulse Advertising**  
Laurie Rickaway

**Website Publisher** Kirby Leshner

### [Representatives]

**Section 1 Rep.** Dan & Jamie Kelly

**Section 2 Rep.** Sheri Beasley

**Section 3 Rep.** Lori Kubin

**Section 4 Rep.** Orlando Romero

**Garden Club Rep.** Carol Jean Hebert

**Plaza Moms Co-Rep.**  
Emily Eldridge, Shannon Zierau

**Men's Group Rep.** Chuck Blesener

**Pulse Editor:** Emily Leffler  
713-628-4210

[pulse@shepherdparkplaza.com](mailto:pulse@shepherdparkplaza.com)

# around the neighborhood



## HALLOWEEN DECORATION AWARDS

### BEST OVERALL ~

#### 1ST PLACE

1028 CANDLELIGHT, GREGORY WALLS

#### 2ND PLACE

1118 RICHELIEU, AMY & ROBERTO PEREZ

### MOST ORIGINAL ~

#### 1ST PLACE

1127 RICHELIEU, BENJAMIN DOCKRILL

#### 2ND PLACE

4707 APOLLO, KIM & CHRIS SCHULTEA

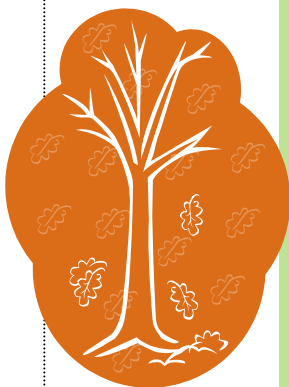
### SCARIEST ~

#### 1ST PLACE

1063 THORNTON, RICARDO CALDERONI

#### 2ND PLACE

1126 RICHELIEU, BRIAN EAGLETON



## Autumn Decoration Awards

### Best Decoration

#### 1st Place

1147 Thornton, Sarrah & Gary Moseley

#### 2nd Place

1119 Candlelight, Daniel Barrett

### Most Original

#### 1st Place

4615 Dunsmere, Karen Cruse & Charli Merchant

#### 2nd Place

1018 Cheshire, Vicki & Tony Cangelosi

### Best Scarecrow

#### 1st Place

1024 Richelieu, Jeanette & Chuck Blesener

#### 2nd Place

1047 Candlelight, Kimberly & Michael Evans

**Patrol Hours** *Prepared by Charli Merchant*

| WEEK         | HOURS PATROLLED |
|--------------|-----------------|
| 1            | 22              |
| 2            | 22              |
| 3            | 23              |
| 4            | 32              |
| <b>TOTAL</b> | <b>99</b>       |

**Interested in patrolling?** Contact **Karen Cruse** at 713-824-4799 or [kjcfm4954@yahoo.com](mailto:kjcfm4954@yahoo.com) for information.

Training for Citizen Patrol certification is the second Tuesday of each month at 9455 West Montgomery at 7 pm. However, the last training for 2013 was in October. Start to make your New Year's Resolutions now to join Citizens on Patrol! Anyone who regularly walks in the neighborhood is invited to join the COP group. More eyes on our neighborhood means more watching for suspicious activity.

The winner of the random \$10 gas bonus this month is **Jeanette Blesener** — congratulations, Jeanette! Patrollers who turn in at least 4 hours by the 5th of the month are eligible for a random drawing for a \$10 gas card. Gift cards for accumulated driving hours will be distributed at the monthly meeting.



## Support SPP Safety Give to the Constable Program

Have you made your contribution yet? There is still time! In addition to our annual civic dues of \$25, we ask that neighbors also support our neighborhood Constable Patrol program with a contribution of \$200. The presence of our Constable, **Deputy James Moulden**, is a deterrent to potential criminals. We all benefit from the visibility and authority provided the Constable Program. We have a safer neighborhood, lower crime rates, and higher property values—it's an investment worth making to keep SPP a wonderful and safe place to live!

**What do you get for \$200?** A full-time armed and uniformed deputy patrolling our neighborhood in a marked vehicle 40 hours per week. Officers from the Constable's patrol division make numerous sweeps of SPP when our deputy is not on duty. **Deputy James Moulden** is assigned to our neighborhood, and he is very dedicated and committed to keeping SPP safe. His work hours are set by the SPPCC board and are based on crime statistics for our neighborhood and the patrol hours of our Citizens Patrol. A great part of the time, our deputy is patrolling while we are fast asleep.

**Please send your contribution today!** The sooner we receive your \$200 contribution, the better able we are to budget for the coming year. If you can't immediately afford the \$200, please send what you can—contributions in any amount are welcome. In fact, we are now able to accept recurring contributions through PayPal at [ShepherdParkPlaza.com](http://ShepherdParkPlaza.com). Or you may mail your contribution to SPPCC Membership Director, Tom Dornak, 1135 Richelieu, Houston, 77018.

### Durham Elementary Principal's Corner

The annual Durham Elementary Fall Festival raised over \$9,000 that will directly benefit our neighborhood school.

The PIA would like to extend our sincerest gratitude to our gracious sponsors who made this a record-breaking festival!



THANKS TO OUR AWESOME SPONSORS!!

**FIREHOUSE DOGS**

**INDYQuest PROPERTIES**  
YOUR DREAM IS OUR QUEST

**Jeanette Labardini, The Leffler Family**  
Custom House Broker (CHB)

**BEST IN SHOW**  
**Gulf Coast Hose Sparkle Maid Services**

**BEST FRIEND**  
**The Duffy Family**

**PICK OF THE LITTER | B&J Landscaping The Childs Family**

Thanks to our Community Supporters



The Sullivan Family **the429@Grace Church** La Familia Ardila

**Plaza Moms** Gospel Truth Church **The Photo Firm** **Brothers Produce**

## CALLS HANDLED BY DEPUTY CONSTABLE



# OCTOBER 2013

Arrests..... 0  
 Alarm Responses..... 3  
 Citizen Contacts..... 132  
 Disturbances..... 1  
 Investigations..... 0  
 Park Checks..... 20

Vacation Watch..... 87  
 Burglary of Motor Vehicle.. 1  
 Burglary of Habitation..... 0  
 Accident Reports..... 1  
 Family Disturbance..... 1  
 Miles Patrolled..... 1,271

Traffic:  
 Verbal/Written Warnings.. 0  
 Citations..... 0  
 Suspicious Persons..... 4  
 Suspicious Vehicles..... 2  
 Medical Emergencies..... 1



**FREE Admission**

- OVER 30 Booths to shop!
- Pictures with Santa
- Silent Auction
- Concession Stand
- Handmade crafts, Home items, Gourmet and MORE!
- FREE re-useable bag to the first 30 shoppers!

St. Rose of Lima  
Catholic School

**Holiday Market**

**Saturday, December 7, 2013**  
10:00 am—3:00 pm

3600 Brinkman St.  
Houston, Texas 77018  
713-691-0104



Lived in SPP since 1982; Garden Club Member; Experienced in Residential & Bank REO Foreclosures. Interact with investors nationally & internationally.

Volunteer and Fund Raiser for the 100 Club, the Ronald McDonald House, the HLS&R, the Food Pantry at St. Rose of Lima and the TX Cattlewomen's Organization.

Fran Marino, Realtor®  
*Marino International Properties, LLC*  
 713-530-5330 [fran@franmarino.com](mailto:fran@franmarino.com)  
*Realm Professional Realty, LLC-Galleria*



### Recycling Rules!

Did you notice that our neighbors in Oak Forest recently received their 96-gallon recycling bins? I know I could hear the cheers from my house! It turns out, at the end of October, the city expanded the curb-side recycling program to 70,000 additional homes around Houston, DOUBLING the number of homes receiving this "single-stream" service!

**What can I recycle?** I've been asked a few times to remind Pulse readers what exactly one can recycle in our lovely 96-gallon rolling recycle bins. Apparently, clarifying these points can save at least one or two marriages in the neighborhood, so here goes...

Recyclable items that can be placed in the green carts include: aluminum cans, cardboard (flattened), glass bottles and jars, junk mail, magazines, newspapers, office paper, paper bags, paperboard, plastics and steel and tin cans 1 - 5 and 7. Please rinse all containers before placing in the recycle bin. Used motor oil can also be recycled, but needs to be in a container *beside* the bin with a screw-top lid.

**What is NOT recyclable?** Plastic bags from the grocery store, though Kroger and many others have repositories where patrons can recycle bags in the stores. Pizza boxes from delivery (too much grease in the cardboard). Tree or yard waste, grass clippings (start a compost pile instead!). Any toxic materials, trash or food products, diapers, need I go on?

**Recyclebank Pilot Program Expiring**—for those of you who are like me and you registered your recycle bin when we received them (since we were part of the pilot program, the organization "Recyclebank" read the computer chips in our bins and gave registered recyclers "points" based on the weight of the bin at pickup), the Recyclebank program is coming to an end, and our earned points will expire at the end of 2014. You can still log in online and redeem points, but we will no longer be earning points, and the points eventually will expire if not used.



# INDYQuest PROPERTIES

YOUR DREAM IS OUR Quest

"With excellent work and service, IndyQuest takes your buying experience to the next level. When I met Creston, I knew that I needed to buy my house with him. They have a great system and workflow to make your experience easy and enjoyable. We would strongly recommend him to anybody. He is knowledgeable, patient, and systematic; an excellent combination and support system. Thank you for making our buying experience excellent!"

-- Francisco and Eva P., Houston, TX

2425 West Loop S. \* Suite 200, #201 \* Houston, TX 77027



**CRESTON & HOLLY INDERRIEDEN**

CONTACT US TODAY AT: 713.301.4054 or creston@indyquest.net

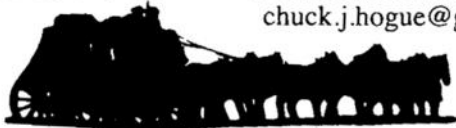
## HOGUE PLUMBING, INC.

Established in 1985

**Chuck Hogue**  
President

**713-895-8733**

P.O. Box 924734  
Houston, Texas 77292-4734  
chuck.j.hogue@gmail.com



**LOW PRICES**

**FREE ESTIMATES**

**CHARLIE ROOFING**

**HARDI SIDING**

BBB 5 GOLD STAR RATING

**Office: 713-688-6463**

**Cell: 281-389-4654**



## Farmer's Termite Management Services

Over 30 years experience in the pest control industry.

**713-681-2420**

Free Estimates  
Credit Cards  
Insured

**FARMER'S**  
Home Maintenance

Fence, Decks, Tile, Sheetrock, Painting, Fixtures

## Luxury Lawns

Full Service Lawn Maintenance

Custom Landscaping  
and Irrigation

Commercial - Residential

**DAVID BARTULA**

**713-688-4244**

LI # 7049



**LEANN SALMONS**  
BROKER ASSOCIATE

**832-868-9453**

lsalmons@marthaturner.com

Area Specialist

Circle of Excellence Award Winner

Certified Marketing Specialist

Lifelong Shepherd Park Plaza Resident

*Martha Turner*  
PROPERTIES

**Hartman**  
& ASSOCIATES

**BILLY HARTMAN**

**713.305.5035**

It's not just my business,  
It's my neighborhood.

*Where do you want to live?*

**Plumbco**  
**Plumbing**  
For all your Plumbing Installations & Repairs  
**713-725-5025**  
FREE Estimates MLP#37538  
[www.plumbcohouston.com](http://www.plumbcohouston.com)

## IMPORTANT NUMBERS

**POLICE/FIRE: 911**

**CITY HELPLINE: 311**

Citizens Patrol  
713-824-4799

Deed Restrictions  
713-681-3600

Plaza Moms  
281-779-5623 or 713-775-0307

New Neighbor/Greeter  
281-344-7013

Garden Club  
713-681-1552

Architectural Guidelines  
713-681-3600

Plaza Pulse News  
713-628-4210

SPP Historian  
713-681-1552

Traffic & Safety  
713-824-4799

Constable Dispatch  
713-755-7628

SPP Membership  
713-683-6502

City Liaison  
713-683-9945

Pulse Advertising  
713-688-0574 or 713-681-3600

Men's Group  
713-683-9945

HPD  
713-884-3131



## SPP CALENDAR

DECEMBER 2013



= Trash and Yard Waste

= Curbside Recycling

| SUNDAY                                           | MONDAY                       | TUESDAY                              | WEDNESDAY | THURSDAY                     | FRIDAY | SATURDAY                              |
|--------------------------------------------------|------------------------------|--------------------------------------|-----------|------------------------------|--------|---------------------------------------|
| 1                                                | 2                            | 3<br>                                | 4         | 5<br><br>LADIES' NIGHT OUT   | 6      | 7<br>Plaza Moms' Breakfast With Santa |
| 8                                                | 9<br><br>Garden Club MEETING | 10<br><br><br><br>Plaza Moms Meeting | 11        | 12                           | 13     | 14                                    |
| 15<br>Holiday Decorations Judging December 15-16 | 16                           | 17<br>                               | 18        | 19<br>Heavy trash JUNK waste | 20     | 21                                    |
| 22                                               | 23                           | 24<br><br>                           | 25<br>    | 26                           | 27     | 28                                    |
| 29                                               | 30                           | 31<br><br><br>HAPPY NEW YEAR         | JAN 1     | 2                            | 3      | 4                                     |
| 5                                                | 6                            | 7<br><br>                            | 8         | 9<br><br>Men's Group MEETING | 10     | 11                                    |



Enjoy December with Plaza Moms! The holidays don't have to be stressful. Take some time for yourself to socialize with friends!

**Thursday, December 5**—Ladies Night Out , 8pm, Corkscrew

**Saturday, December 7**—Breakfast with Santa at Durham Elementary

**Tuesday, December 10**—Monthly Meeting and White Elephant Gift Exchange, 7pm at the home of Courtney Edmiston, 1026 Martin



## Men's Group

The SPP Men's Group has elected to not meet in the busy month of December so that the members might spend more time with their families and friends. They will meet again on January 9th at Hibachi Grill on 34th Street to celebrate the New Year.

For more information on the group, contact Chuck Blesener at ccbles77@gmail.com or 713-683-9945.



## Shepherd Park Plaza Travelers

The next outing is in 2014!

January 22nd, possibly to the Railean Rum Distillery in Eagle Point. This is one the Pulse Editor may have to follow behind in an "Under 50" vehicle...

\*\*\*\*\*

For more information about the SPP Travelers, contact Chuck Blesener at ccbles77@gmail.com or 713-683-9945. Chuck sends periodic emails to the Travelers group—send him an email if you'd like to be included in future messages.



## Garden Club

The Shepherd Park Plaza Garden Club met on Monday, November 11, 2013 at the home of **Carolyn Long**, 1163 Chamboard. **Debbie Elliott**, **Susan Fitzpatrick**, **Linda Morgan** and **Ruth Rock** were co-hostesses.

Ms. **Beth Galiano**, a SPPGC Member, gave a video and verbal presentation on Herbs. Additionally, Beth graciously donated a large assortment of herbs to be given as door prizes.

The business meeting included the positive results of the SPPGC's Silent Auction and Dessert Table at the October 19th SPP Fall Festival. A big Thank You was given to the many Members who made this a successful event. All funds raised by these endeavors will be used for the beautification of SPP. **Lori Kubin**, Second V.P. gave final details of the December 9, 2013 Christmas Party. A fun gift exchange will be included.



The night concluded with our traditional door prize awarding. Thanks to Beth and all the Hostesses there was an abundance of

door prizes. From all appearances almost everyone received a little something special.

Our next meeting will be our Christmas Party to be held on Monday, December 9, 2013, 7:00 p.m., at Fratelli's, 1330 Wirt Road. Husbands and Guests are most welcome.

Garden Club meetings are held on the Second Monday of the month, September through May at 7:00 p.m. If you are interested please contact **Carol Jean Hebert** at (713) 681-1552 or CarolJeanHebert@yahoo.com for further details.

\*\*\*\*\*

The Garden Club's  
**November**  
Yard of the Month Award  
goes to:  
**Romi Sandel**  
1057 Martin





# THE PLAZA PULSE

SHEPHERD PARK PLAZA CIVIC CLUB

SHEPHERD PARK PLAZA CIVIC CLUB  
P. O. Box 10453  
HOUSTON, TX 77206  
[WWW.SHEPHERDPARKPLAZA.COM](http://WWW.SHEPHERDPARKPLAZA.COM)

PRSR STD  
US POSTAGE  
PAID  
DMR, 77041

## November YARDS OF THE MONTH

### Section 1:

979 CURTIN  
TERRY & VICKI BRANDT

### Section 3:

1027 CHESHIRE  
LISA HESS

### Section 2:

4703 CLIFT HAVEN  
HOWARD & NORMA STARR

### Section 4:

1123 RICHELIEU  
ROBERT KELLEY

SPP  
Wants to Welcome You

New to the neighborhood?

Even if you are not-so-new, but haven't  
gotten around to introducing yourself yet,  
contact **Evonne Alford Sturm**  
at 281-344-7013  
or [EvonneAlford@comcast.net](mailto:EvonneAlford@comcast.net)  
so we can welcome you officially.